

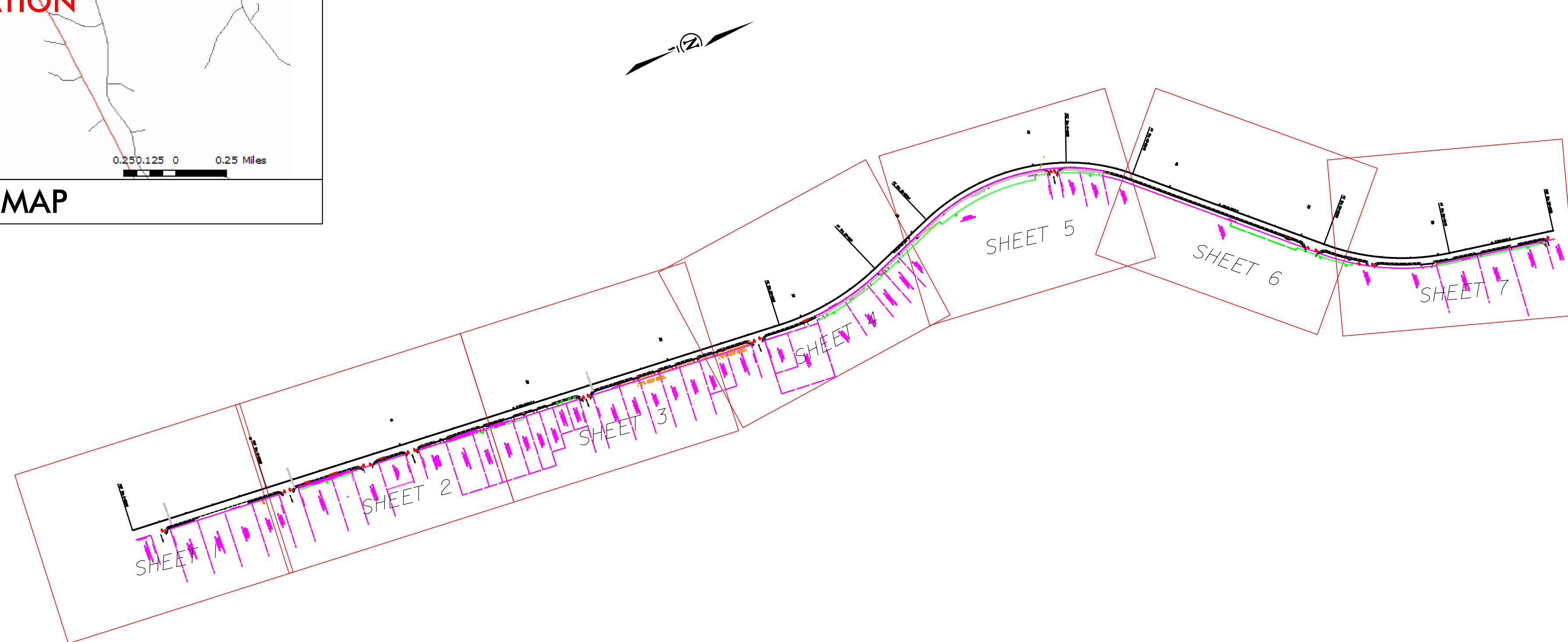
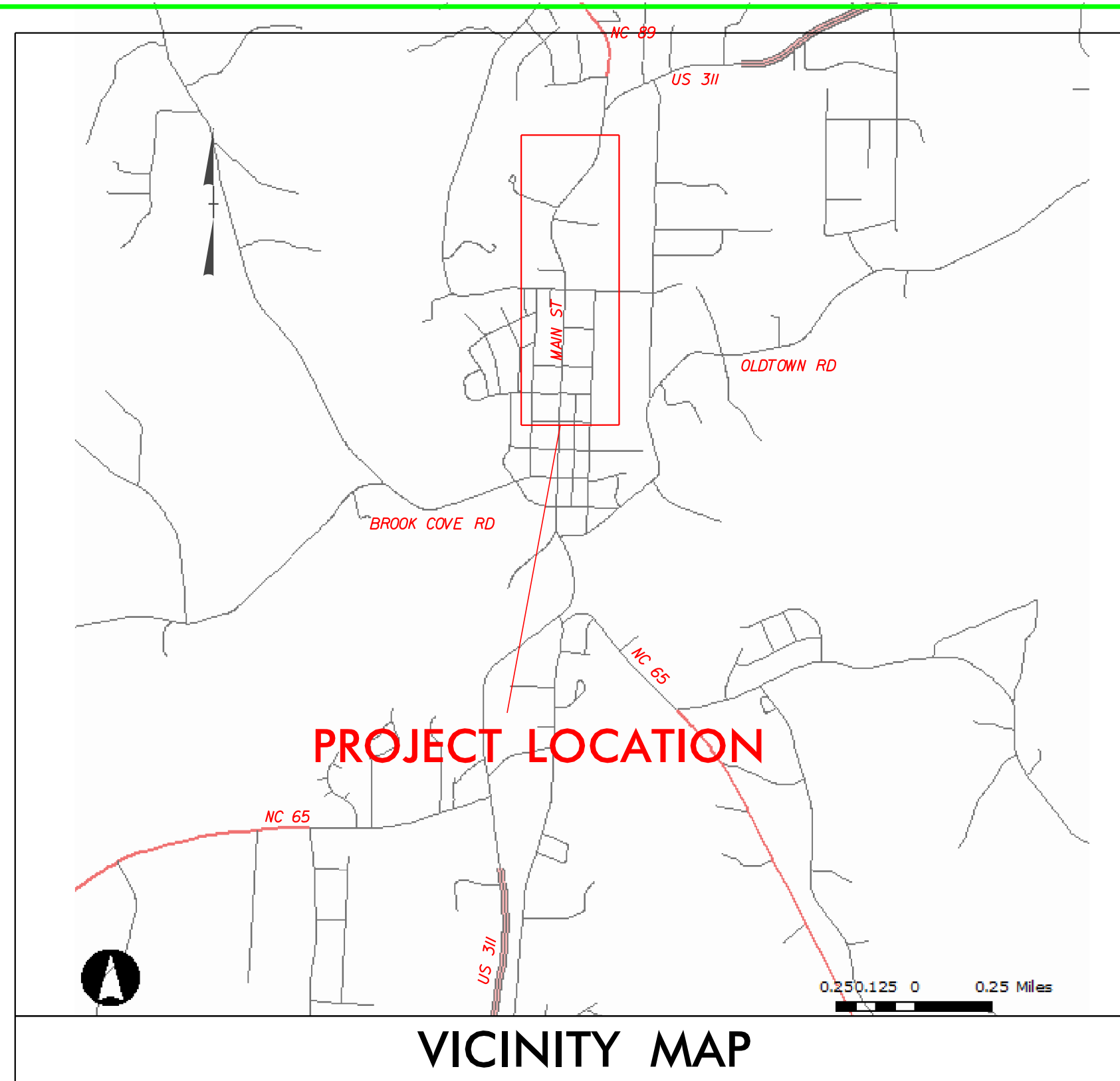
PROJECT REFERENCE NO.	SHEET NO.
WALNUT COVE SIDEWALK	1 OF 9
TITLE SHEET NO.	
1 OF 1	
ROADWAY DESIGN ENGINEER	HYDRAULICS ENGINEER

STATE OF NORTH CAROLINA  
 DIVISION OF HIGHWAYS  
 DIVISION 9 DISTRICT 2

# WALNUT COVE MAIN STREET SIDEWALK

**LOCATION: ALONG THE EAST SIDE OF MAIN STREET BETWEEN FIFTH STREET AND THE WALNUT COVE SHOPPIN CENTER.**

**TYPE OF WORK: SIDEWALK CONSTRUCTION**



### EROSION CONTROL LEGEND

ROCK INLET PROTECTION:	
896.01 TYPE A.....	A [Symbol] OR A)
896.02 TYPE B.....	B [Symbol] OR B)
896.03 TYPE C.....	C [Symbol] OR C)
897.01 ROCK PIPE INLET PROTECTION.....	[Symbol]
N/A PIPE OUTLET ENERGY DISSIPATOR.....	[Symbol]
N/A DRAINAGE TURNOUT.....	[Symbol]
N/A RIP-RAP LINED DITCH.....	[Symbol]
N/A STREAM.....	[Symbol]
N/A HIGH POINT/ WATER FLOW DIRECTION.....	[Symbol]
245.01 SILT BASIN TYPE A.....	[Symbol]
245.02 SILT BASIN TYPE B.....	[Symbol]
245.03 TEMPORARY SILT DITCH.....	—TSD—
245.05 TEMPORARY DIVERSION DITCH.....	—TD—
100.01B STORM DRAINAGE GE PIPE.....	[Symbol]
890.05 TEMP. SLOPE DRAIN W/ EARTH BERM.....	[Symbol]
892.01 TEMPORARY ROCK SEDIMENT DAM TYPE A.....	[Symbol]
892.02 TEMPORARY ROCK SEDIMENT DAM TYPE B.....	[Symbol]
A BAFFLE IN A SEDIMENT DAM (EVERY 10')	*****
892.04 TEMPORARY ROCK SILT CHECK TYPE A.....	[Symbol]
893.01 TEMPORARY SILT FENCE.....	[Symbol]
894.01 ROCK SILT SCREEN.....	[Symbol]
895.10 TEMPORARY ROCK SILT CHECK TYPE B.....	[Symbol]
N/A WATTLE.....	[Symbol]

### LEGEND

EXISTING EDGE OF PAVEMENT.....	[Symbol]
EXISTING BACK OF CURB.....	[Symbol]
EXISTING EDGE OF TRAVEL WAY.....	[Symbol]
EXISTING CONCRETE ISLAND.....	[Symbol]
PROPOSED EDGE OF PAVEMENT.....	[Symbol]
PROPOSED BACK OF CURB.....	[Symbol]
PROPOSED LANE LINES.....	[Symbol]
(NOTE: STRIPING WILL BE DRAWN UP BY TRAFFIC SERVICES)	
PROPOSED CONCRETE ISLAND.....	[Symbol]
EXISTING RIGHT-OF-WAY LINE.....	[Symbol]
PROPOSED RIGHT-OF-WAY LINE.....	[Symbol]
EXISTING PROPERTY LINE.....	[Symbol]
PROPOSED EASEMENT CONSTRUCTION.....	[Symbol]
PROPOSED TOE OF SLOPE.....	[Symbol]

### UTILITIES & STRUCTURES

UTILITY & SIGNAL POLE.....	[Symbol]
POWER POLE.....	[Symbol]
TELEPHONE PEDESTAL.....	[Symbol]
GUY WIRE.....	[Symbol]
SIGNAL BOX.....	[Symbol]
SANIT. SEWER MANHOLE.....	[Symbol]
SANIT. SEWER CLEANOUT.....	[Symbol]
WATER METER.....	[Symbol]
WATER VALVE.....	[Symbol]
FIRE HYDRANT.....	[Symbol]
GAS METER.....	[Symbol]
GAS VALVE.....	[Symbol]
CATCH BASIN & D.T'S.....	[Symbol]
GUARDRAIL.....	[Symbol]
FENCE.....	[Symbol]
SIDEWALK.....	[Symbol]
TREE.....	[Symbol]
HEDGE ROW.....	[Symbol]

REVISED 09 / 05 / 2012

TITLE SHEET NOT TO SCALE

Prepared In the Office of:  
**DEPARTMENT OF TRANSPORTATION**  
 375 SILAS CREEK PKWY, WINSTON SALEM, NC 27127

2002 STANDARD SPECIFICATIONS  
 COUNTY: FORSYTH 5/08/2012 NTS II  
 W.O. NUMBER: NA DATE DRAWN DRAWN BY  
 8/02/2012 NTS II  
 PLAN SCALE: NA REVISED DATE DRAWN BY

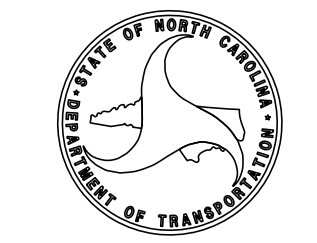
DISTRICT ENGINEER

JPR SIGNATURE: P.E. DATE

DIVISION TRAFFIC ENGINEER

JPC SIGNATURE: P.E. DATE

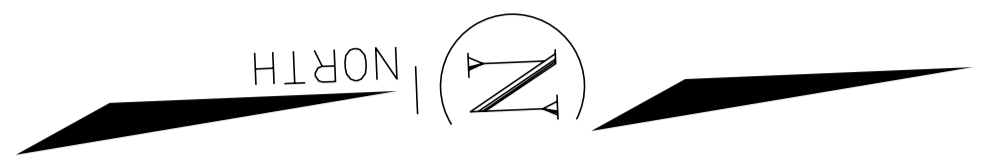
DIVISION OF HIGHWAYS  
 STATE OF NORTH CAROLINA



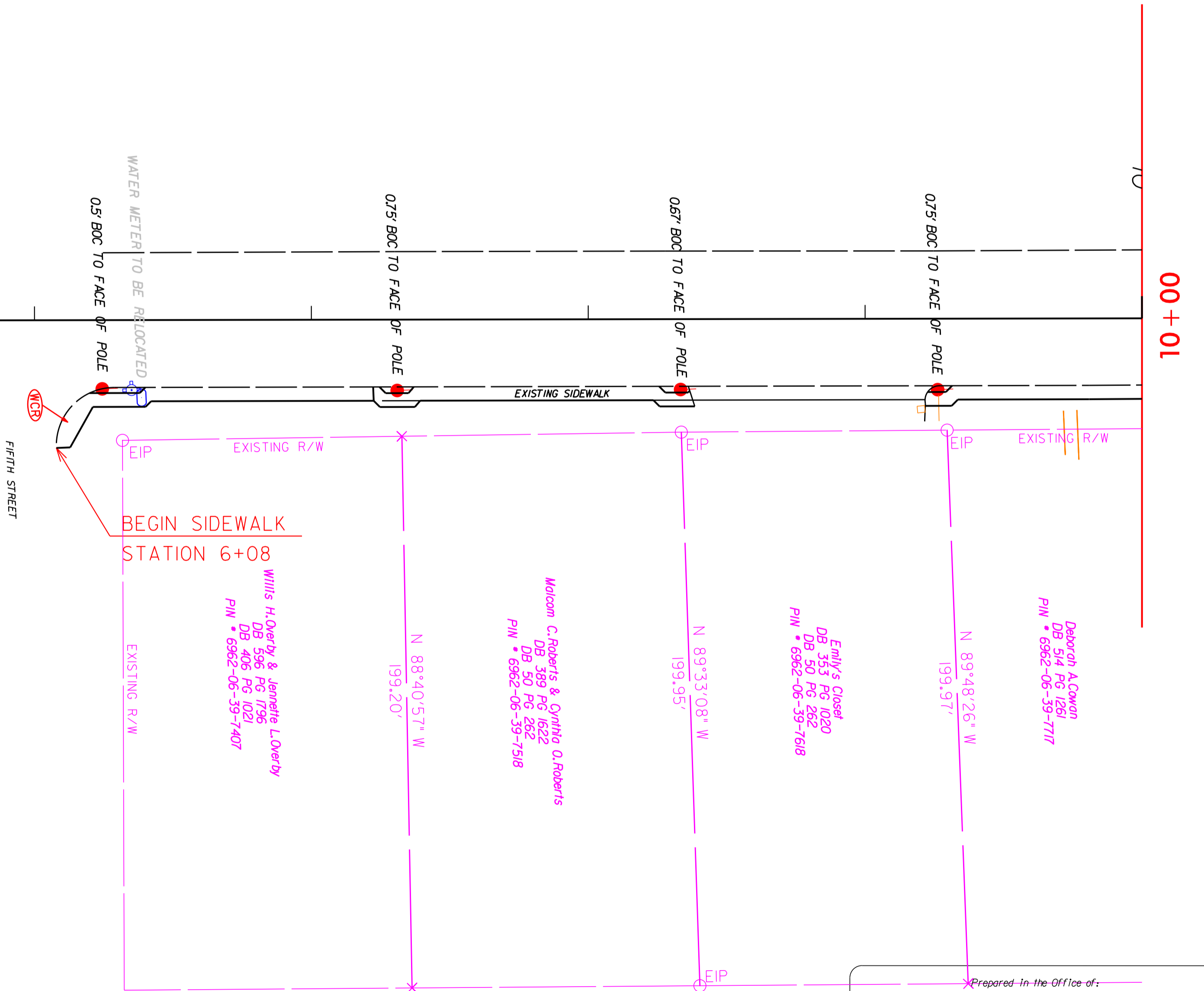
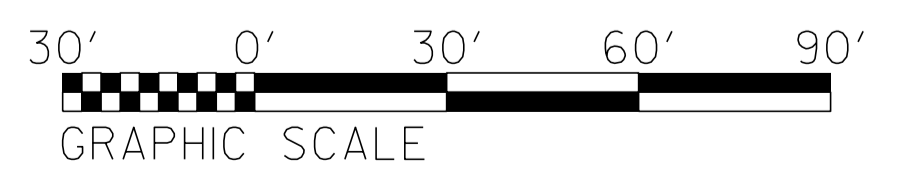
8/17/99

I:\SEP-2012\0840\05\cad\258657\rdy\CURRENT\Walnut Cove Sidewalk\DCNS\MAINSTREETWALK\_K.Rdy.tsh.dgn

PROJECT REFERENCE NO.	SHEET NO.
MAIN ST SIDEWALK	2 OF 9
PLAN SHEET NO.	1 OF 7
ROADWAY DESIGN ENGINEER	HYDRAULICS ENGINEER



POT Sta. 5+00.00



First Citizens Bank & Trust Company  
DB 347 PG 118  
PIN • 6962-06-39-6351

Willis H. Overby & Janelle L. Overby  
DB 596 PG 1796  
DB 406 PG 1021  
PIN • 6962-06-39-7407

Malcom C. Roberts & Cynthia O. Roberts  
DB 389 PG 1622  
DB 50 PG 262  
PIN • 6962-06-39-7518

Emily's Closet  
DB 353 PG 1020  
DB 50 PG 262  
PIN • 6962-06-39-7618

Deborah A. Cowan  
DB 514 PG 1251  
PIN • 6962-06-39-7717

DATE	REVISIONS
7-15-13	CHANGED ALIGNMENT

Prepared in the Office of:

**DEPARTMENT OF TRANSPORTATION**  
375 SILAS CREEK PKWY, WINSTON SALEM, NC 27127

2006 STANDARD SPECIFICATIONS

DATE	APPROVED BY	DATE

PROJECT NAME: MAIN ST. SIDEWALK

W.O. NUMBER: NA

US 311/MAIN ST.

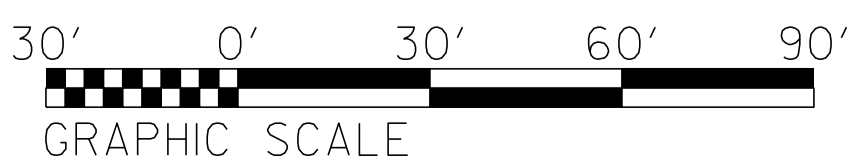
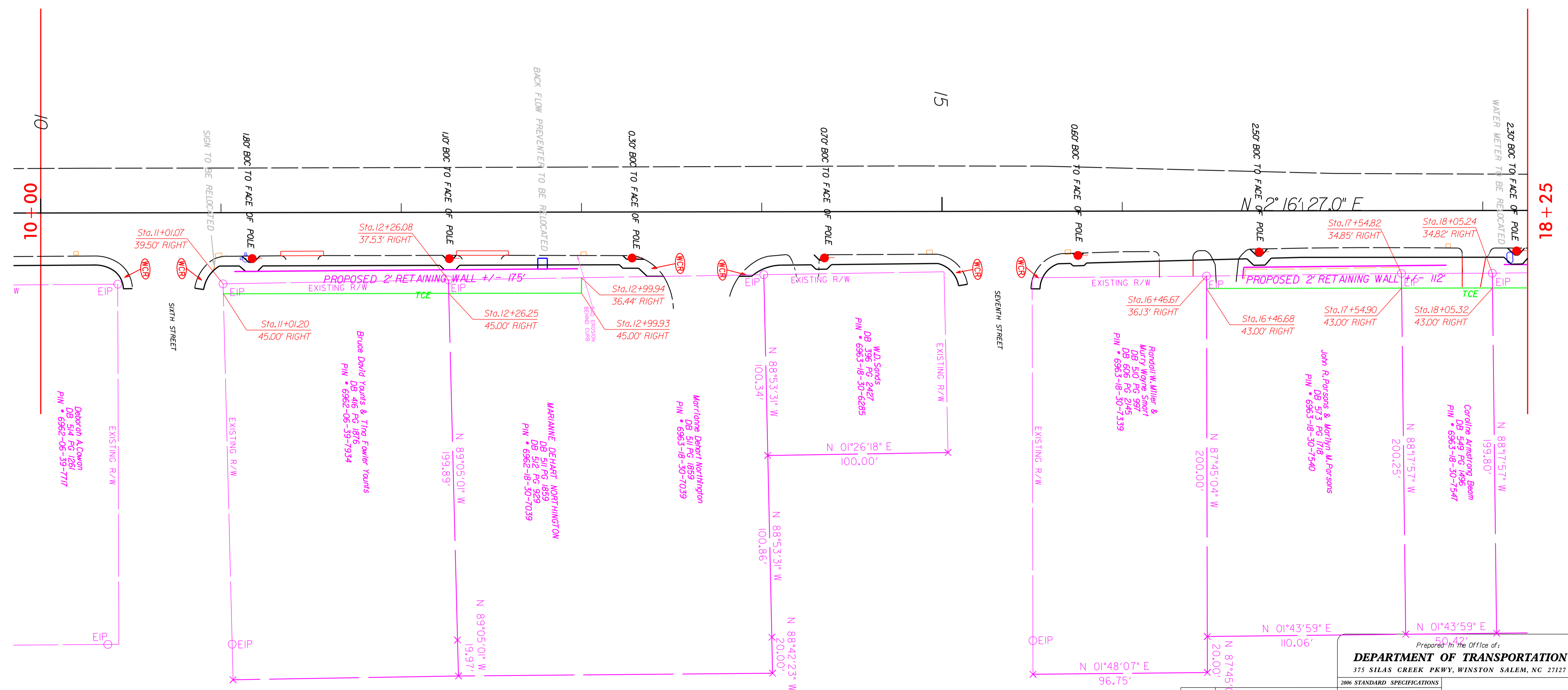
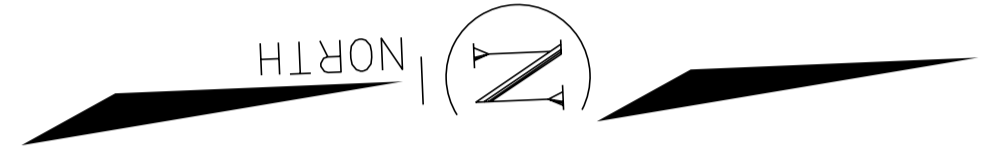
SR # / ROAD NAME: STOKES

COUNTY: COUNTY

SCALE 1" = 30'

PROJECT REFERENCE NO.	SHEET NO.
MAIN ST SIDEWALK	3 OF 9
PLAN SHEET NO.	2 OF 7
ROADWAY DESIGN ENGINEER	HYDRAULICS ENGINEER

OWNER NAME (Now or Formerly)	PIN #	R/W AREA	TCE AREA
BRUCE DAVID YOUNTS et.al.	6962-06-39-7934		811 SQ.FT.
MARIANNE DEHART NORTHINGTON	6962-18-30-7039		591 SQ.FT.
JOHN R. PARSONS et.al.	6963-18-30-7540		813 SQ.FT.
CAROLINE ARMSTRONG BEAM	6963-18-30-7547		412 SQ.FT.
MMD PROPERTIES LLC	6963-18-30-7654		866 SQ.FT.
MMD PROPERTIES LLC	6963-18-30-7654		474 SQ.FT.
DAPHNE DIANE LANE	6963-18-31-7970		1299 SQ.FT.
LOUIS MCCRAY MARTIN	6963-18-32-7023		999 SQ.FT.
RAYMOND J. BIBEY et.al.	6963-18-32-7290		773 SQ.FT.
DENNIS R. HAYDEN et.al.	6963-18-32-6169		729 SQ.FT.
GLEN SHAMBURG	6963-14-32-6508	34 SQ.FT.	10720 SQ.FT.
NATALIE SMILEY	6963-14-32-5865		624 SQ.FT.
ROBERT D. PARIS	6963-14-32-5982		999 SQ.FT.
TOTAL		272 SQ.FT.	20110 SQ.FT.



DATE	REVISIONS
7-15-13	CHANGED ALIGNMENT

Prepared in the Office of:

**DEPARTMENT OF TRANSPORTATION**  
375 SILAS CREEK CREEK PKWY, WINSTON SALEM, NC 27127

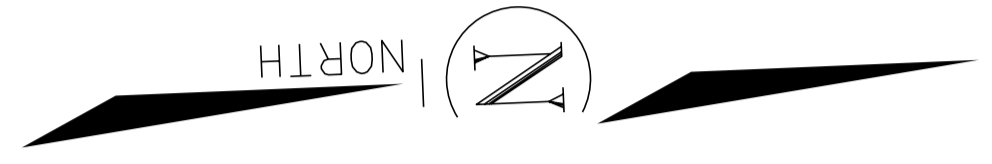
2006 STANDARD SPECIFICATIONS

PROJECT NAME	MAIN ST. SIDEWALK	APP. BY DIST. ENG.	DATE
W.O. NUMBER	NA	APP. BY DIV. TRAFFIC ENG.	DATE
SR # / ROAD NAME	US 31/MAIN ST.	REVISED	CHECKED BY
COUNTY	STOKES	5-8-12	NTSII
		DATE DRAWN	DRAWN BY
		SCALE	1" = 30'

03-JAN-2016 11:11:55 C:\p04268341\rdy\CURRENT\Walnut Cove Sidewalk\KENS\MAIN\SIDEWALK5.dwg

PROJECT REFERENCE NO.	SHEET NO.
MAIN ST SIDEWALK	4 OF 9
PLAN SHEET NO.	3 OF 7
ROADWAY DESIGN ENGINEER	HYDRAULICS ENGINEER

OWNER NAME (Now or Formerly)	PIN #	R/W AREA	TCE AREA
BRUCE DAVID YOUNTS et.al.	6962-06-39-7934		811 SQ.FT.
MARIANNE DEHART NORTHINGTON	6962-18-30-7039		591 SQ.FT.
JOHN R. PARSONS et.al.	6963-18-30-7540		813 SQ.FT.
CAROLINE ARMSTRONG BEAM	6963-18-30-7547		412 SQ.FT.
MMD PROPERTIES LLC	6963-18-30-7654		866 SQ.FT.
MMD PROPERTIES LLC	6963-18-30-7654		474 SQ.FT.
DAPHNE DIANE LANE	6963-18-31-7970		1299 SQ.FT.
LOUIS MCCRAY MARTIN	6963-18-32-7023		999 SQ.FT.
RAYMOND J. BIBEY et.al.	6963-18-32-7290		773 SQ.FT.
DENNIS R. HAYDEN et.al.	6963-18-32-6169		729 SQ.FT.
GLEN SHAMBURG	6963-14-32-6508	34 SQ.FT.	10720 SQ.FT.
NATALIE SMILEY	6963-14-32-5865		624 SQ.FT.
ROBERT D. PARIS	6963-14-32-5982		999 SQ.FT.
TOTAL		272 SQ.FT.	20110 SQ.FT.



DATE	REVISIONS
7-15-13	CHANGED ALIGNMENT

Prepared In the Office of:

**DEPARTMENT OF TRANSPORTATION**  
375 SILAS CREEK PKWY, WINSTON SALEM, NC 27127

2006 STANDARD SPECIFICATIONS

APP. BY DIST. ENG.	DATE
APP. BY DIV. TRAFFIC ENG.	DATE
REVISED	CHECKED BY
5-8-12	NTSII
DATE DRAWN	DRAWN BY

SCALE 1" = 30'

03-JAN-2016 14:13 C:\p03\2016\1413\1\rdy\CURRENT\Wainut Cove Sidewalk\DCMS\MAIN\ST\SIDEWALK.K6.dgn

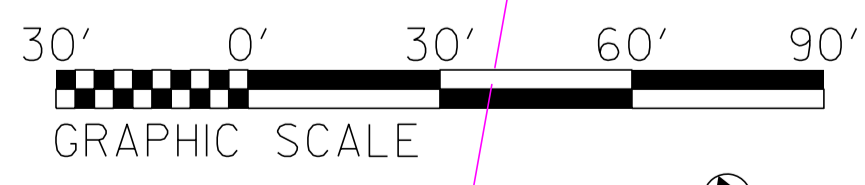
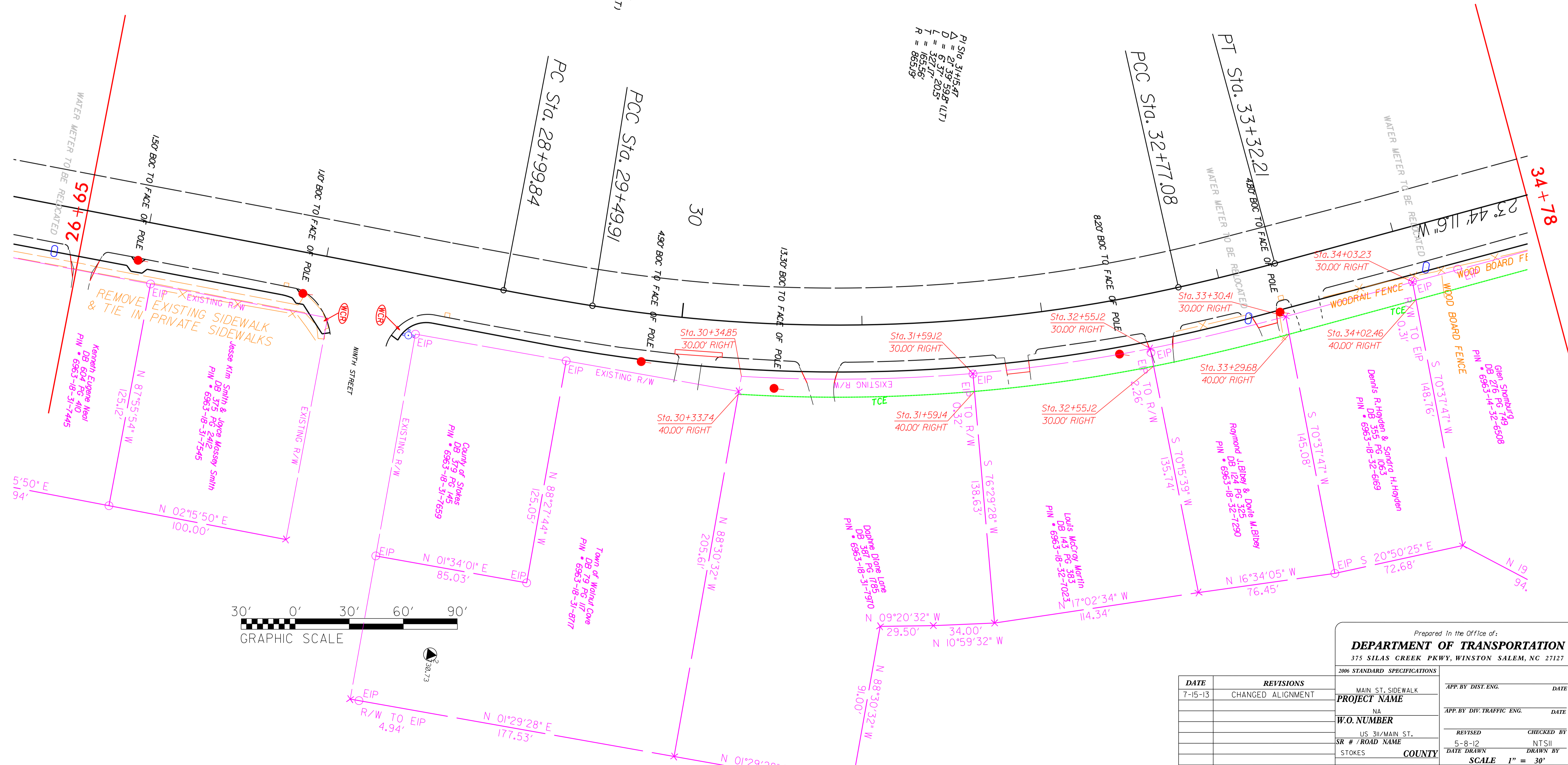
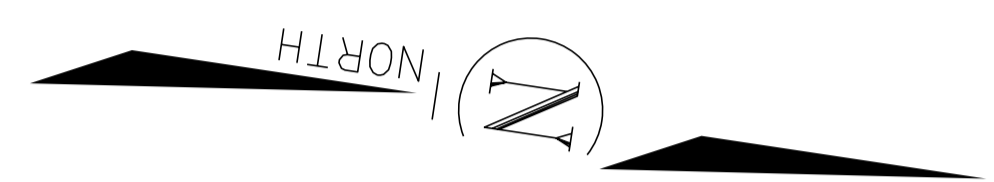
8/17/2016

OWNER NAME (Now or Formerly)	PIN #	R/W AREA	TCE AREA
BRUCE DAVID YOUNTS et.al.	6962-06-39-7934		811 SQ.FT.
MARIANNE DEHART NORTHINGTON	6962-18-30-7039		591 SQ.FT.
JOHN R. PARSONS et.al.	6963-18-30-7540		813 SQ.FT.
CAROLINE ARMSTRONG BEAM	6963-18-30-7547		412 SQ.FT.
MMD PROPERTIES LLC	6963-18-30-7654		866 SQ.FT.
MMD PROPERTIES LLC	6963-18-30-7654		474 SQ.FT.
DAPHNE DIANE LANE	6963-18-31-7970		1299 SQ.FT.
LOUIS MCCRAY MARTIN	6963-18-32-7023		999 SQ.FT.
RAYMOND J. BIBEY et.al.	6963-18-32-7290		773 SQ.FT.
DENNIS R. HAYDEN et.al.	6963-18-32-6169		729 SQ.FT.
GLEN SHAMBURG	6963-14-32-6508	34 SQ.FT.	10720 SQ.FT.
NATALIE SMILEY	6963-14-32-5865		624 SQ.FT.
ROBERT D. PARIS	6963-14-32-5982		999 SQ.FT.
TOTAL		272 SQ.FT.	20710 SQ.FT.

$PI\ Sta. 33+04.65$   
 $\Delta = 2^{\circ}32'34.88" (LT)$   
 $D = 4^{\circ}36'45.9"$   
 $L = 551.3'$   
 $T = 27.57'$   
 $R = 124212'$

$PI\ Sta. 31+15.47$   
 $\Delta = 2^{\circ}39'59.8" (LT)$   
 $D = 6^{\circ}37'20.5"$   
 $L = 3271.7'$   
 $T = 165.56'$   
 $R = 86519'$

$PI\ Sta. 29+24.87$   
 $\Delta = 1^{\circ}48'04.1" (LT)$   
 $D = 3^{\circ}35'49.6"$   
 $L = 5007.4'$   
 $T = 250.4'$   
 $R = 159282'$



DATE	REVISIONS
7-15-13	CHANGED ALIGNMENT

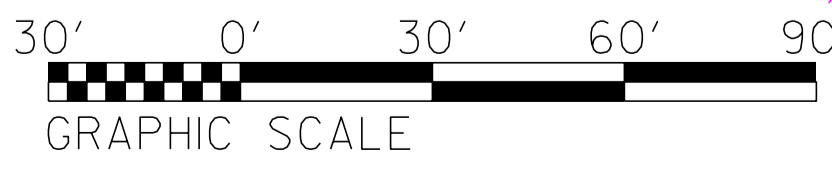
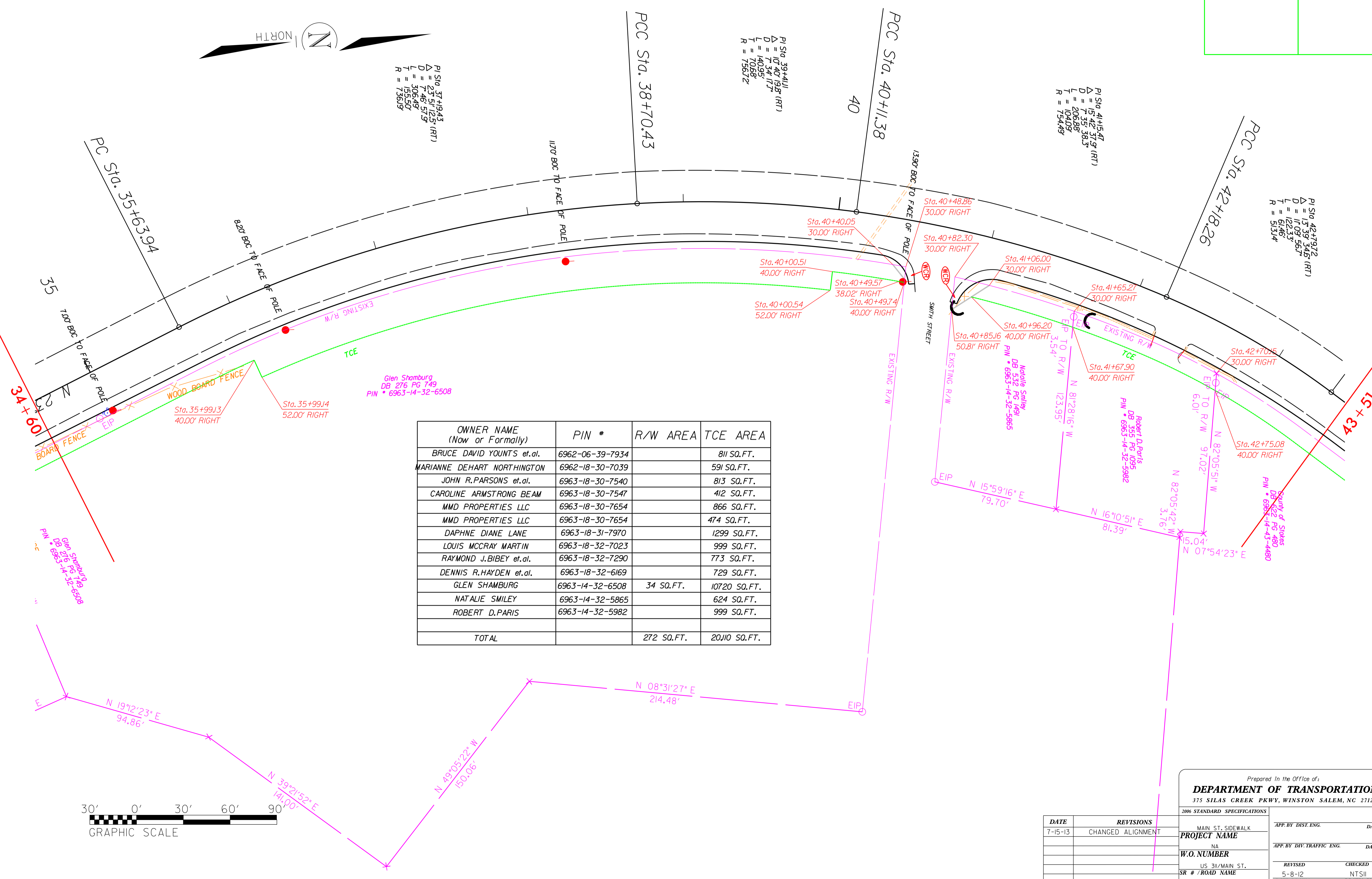
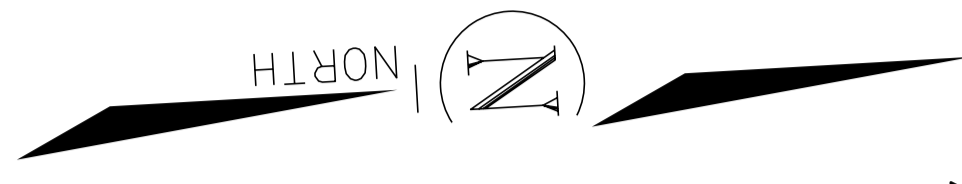
Prepared In the Office of:

**DEPARTMENT OF TRANSPORTATION**  
 375 SILAS CREEK PKWY, WINSTON SALEM, NC 27127

2006 STANDARD SPECIFICATIONS

APP. BY DIST. ENG.	DATE
APP. BY DIV. TRAFFIC ENG.	DATE
REVISED	CHECKED BY
5-8-12	NTSII
DATE DRAWN	DRAWN BY

SCALE 1" = 30'



Prepared in the Office of:  
**DEPARTMENT OF TRANSPORTATION**  
 375 SILAS CREEK PKWY, WINSTON SALEM, NC 27127

DATE	REVISIONS	APP. BY DIST. ENG.	DATE
7-15-13	CHANGED ALIGNMENT		
		APP. BY DIV. TRAFFIC ENG.	DATE
		REVISED	CHECKED BY
		5-8-12	NTSII
		DATE DRAWN	DRAWN BY

2006 STANDARD SPECIFICATIONS

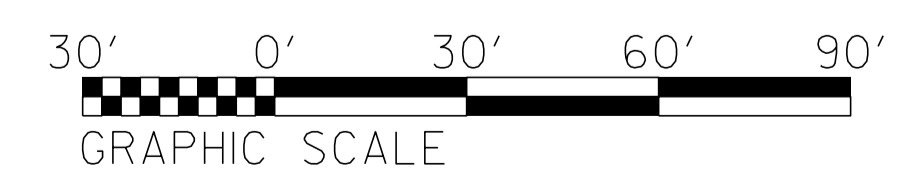
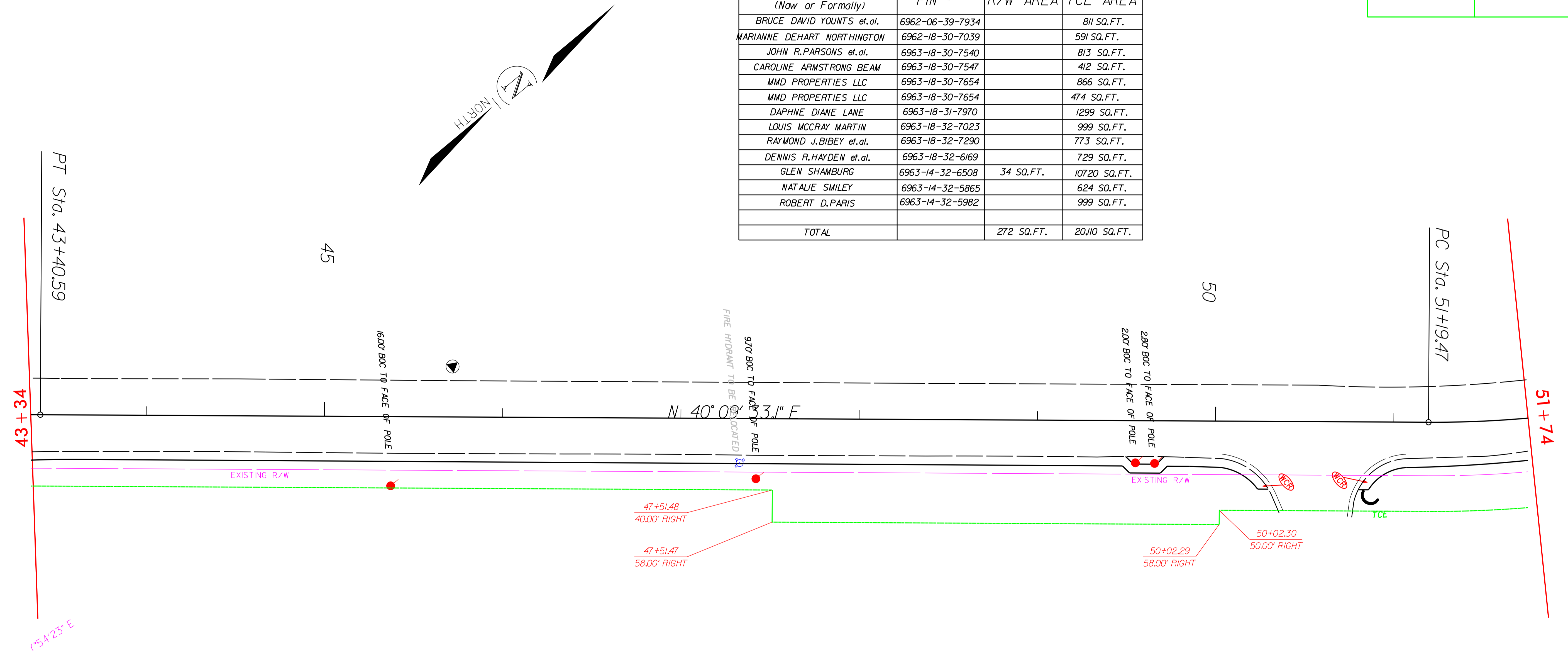
PROJECT NAME	MAIN ST. SIDEWALK	SR # / ROAD NAME	US 311 / MAIN ST.	COUNTY	STOKES
W.O. NUMBER	NA				

SCALE 1" = 30'

03-JAN-2016 14:16  
 C:\Users\jacob\Documents\Main St. Sidewalk\Main St. Sidewalk.dwg  
 8/17/19

PROJECT REFERENCE NO.	SHEET NO.
MAIN ST SIDEWALK	7 OF 9
PLAN SHEET NO.	6 OF 7
ROADWAY DESIGN ENGINEER	HYDRAULICS ENGINEER

OWNER NAME (Now or Formerly)	PIN #	R/W AREA	TCE AREA
BRUCE DAVID YOUNTS et.al.	6962-06-39-7934		811 SQ.FT.
MARIANNE DEHART NORTHINGTON	6962-18-30-7039		591 SQ.FT.
JOHN R. PARSONS et.al.	6963-18-30-7540		813 SQ.FT.
CAROLINE ARMSTRONG BEAM	6963-18-30-7547		412 SQ.FT.
MMD PROPERTIES LLC	6963-18-30-7654		866 SQ.FT.
MMD PROPERTIES LLC	6963-18-30-7654		474 SQ.FT.
DAPHNE DIANE LANE	6963-18-31-7970		1299 SQ.FT.
LOUIS MCCRAY MARTIN	6963-18-32-7023		999 SQ.FT.
RAYMOND J. BIBEY et.al.	6963-18-32-7290		773 SQ.FT.
DENNIS R. HAYDEN et.al.	6963-18-32-6169		729 SQ.FT.
GLEN SHAMBURG	6963-14-32-6508	34 SQ.FT.	10720 SQ.FT.
NATALIE SMILEY	6963-14-32-5865		624 SQ.FT.
ROBERT D. PARIS	6963-14-32-5982		999 SQ.FT.
TOTAL		272 SQ.FT.	20110 SQ.FT.



DATE	REVISIONS	APP. BY DIST. ENG.	DATE
7-15-13	CHANGED ALIGNMENT		

Prepared In the Office of:  
**DEPARTMENT OF TRANSPORTATION**  
 375 SILAS CREEK PKWY, WINSTON SALEM, NC 27127

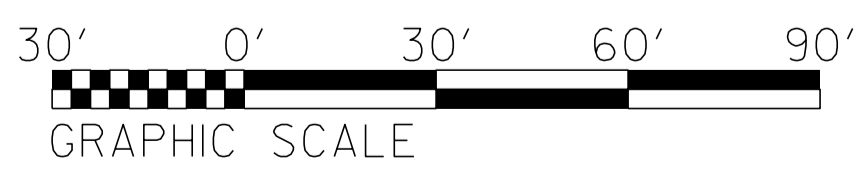
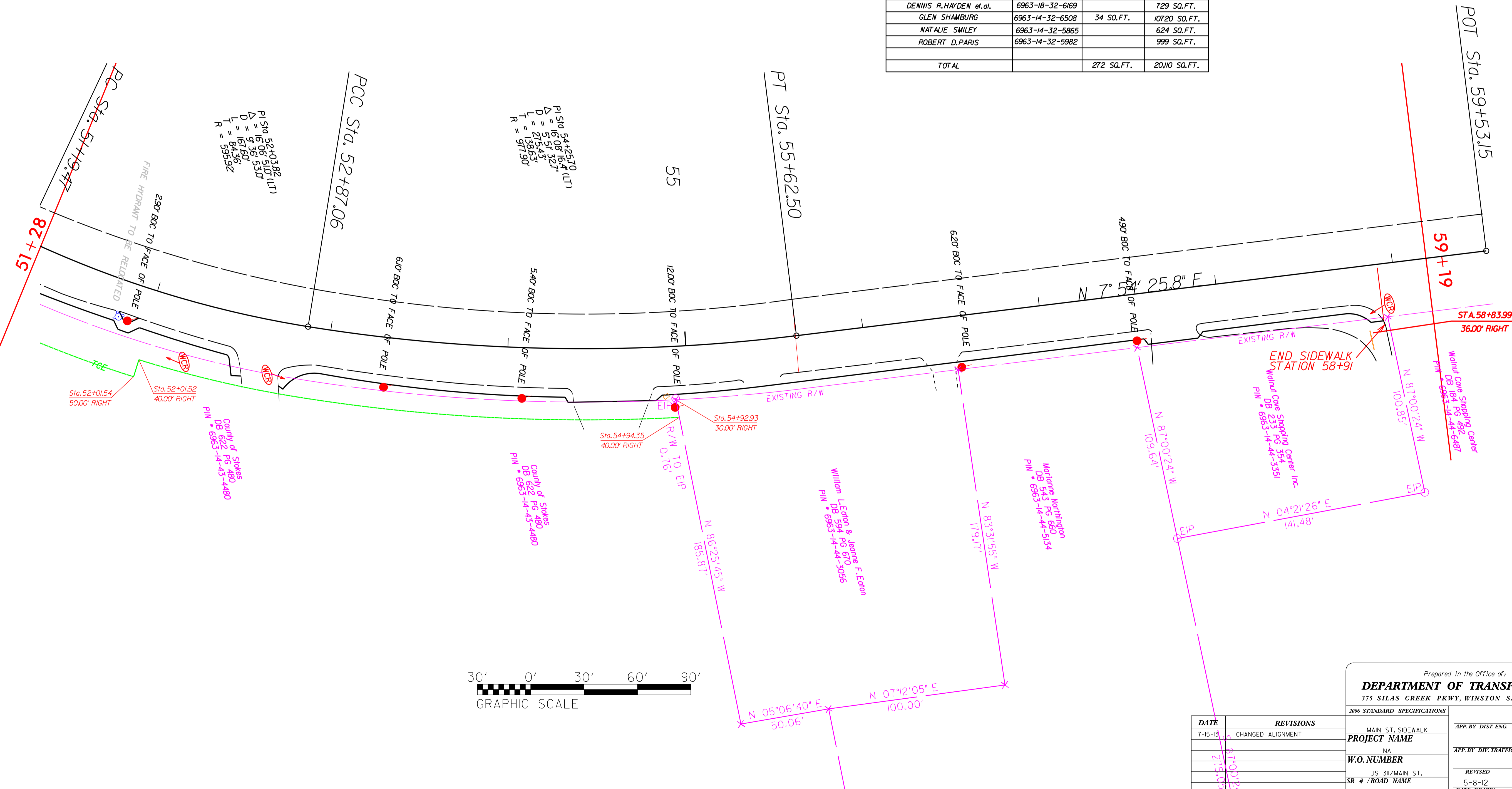
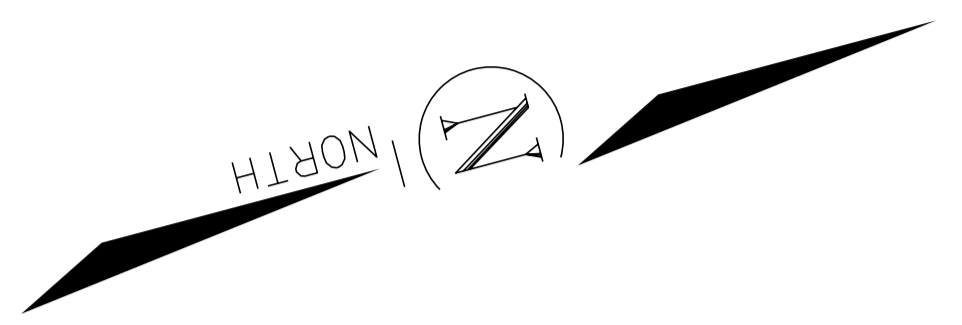
2006 STANDARD SPECIFICATIONS

PROJECT NAME	MAIN ST. SIDEWALK	APP. BY DIST. ENG.	DATE
W.O. NUMBER	NA	APP. BY DIV. TRAFFIC ENG.	DATE
SR # / ROAD NAME	US 311/MAIN ST.	REVISED	CHECKED BY
STOKES COUNTY		5-8-12	NTSII
		DATE DRAWN	DRAWN BY

SCALE 1" = 30'

03-JAN-2016 14:18  
 C:\Users\jacob\Documents\MainStSidewalk.dgn  
 8/17/99

OWNER NAME (Now or Formerly)	PIN #	R/W AREA	TCE AREA
BRUCE DAVID YOUNTS et.al.	6962-06-39-7934		811 SQ.FT.
MARIANNE DEHART NORTHINGTON	6962-18-30-7039		591 SQ.FT.
JOHN R. PARSONS et.al.	6963-18-30-7540		813 SQ.FT.
CAROLINE ARMSTRONG BEAM	6963-18-30-7547		412 SQ.FT.
MMD PROPERTIES LLC	6963-18-30-7654		866 SQ.FT.
MMD PROPERTIES LLC	6963-18-30-7654		474 SQ.FT.
DAPHNE DIANE LANE	6963-18-31-7970		1299 SQ.FT.
LOUIS MCCRAY MARTIN	6963-18-32-7023		999 SQ.FT.
RAYMOND J. BIBBY et.al.	6963-18-32-7290		773 SQ.FT.
DENNIS R. HAYDEN et.al.	6963-18-32-6169		729 SQ.FT.
GLEN SHAMBURG	6963-14-32-6508	34 SQ.FT.	10720 SQ.FT.
NATALIE SMILEY	6963-14-32-5865		624 SQ.FT.
ROBERT D. PARIS	6963-14-32-5982		999 SQ.FT.
TOTAL		272 SQ.FT.	20110 SQ.FT.



DATE	REVISIONS
7-15-13	CHANGED ALIGNMENT
8-10-13	
2-15-15	

DATE DRAWN	5-8-12	CHECKED BY	NTSII
DATE DRAWN		DRAWN BY	

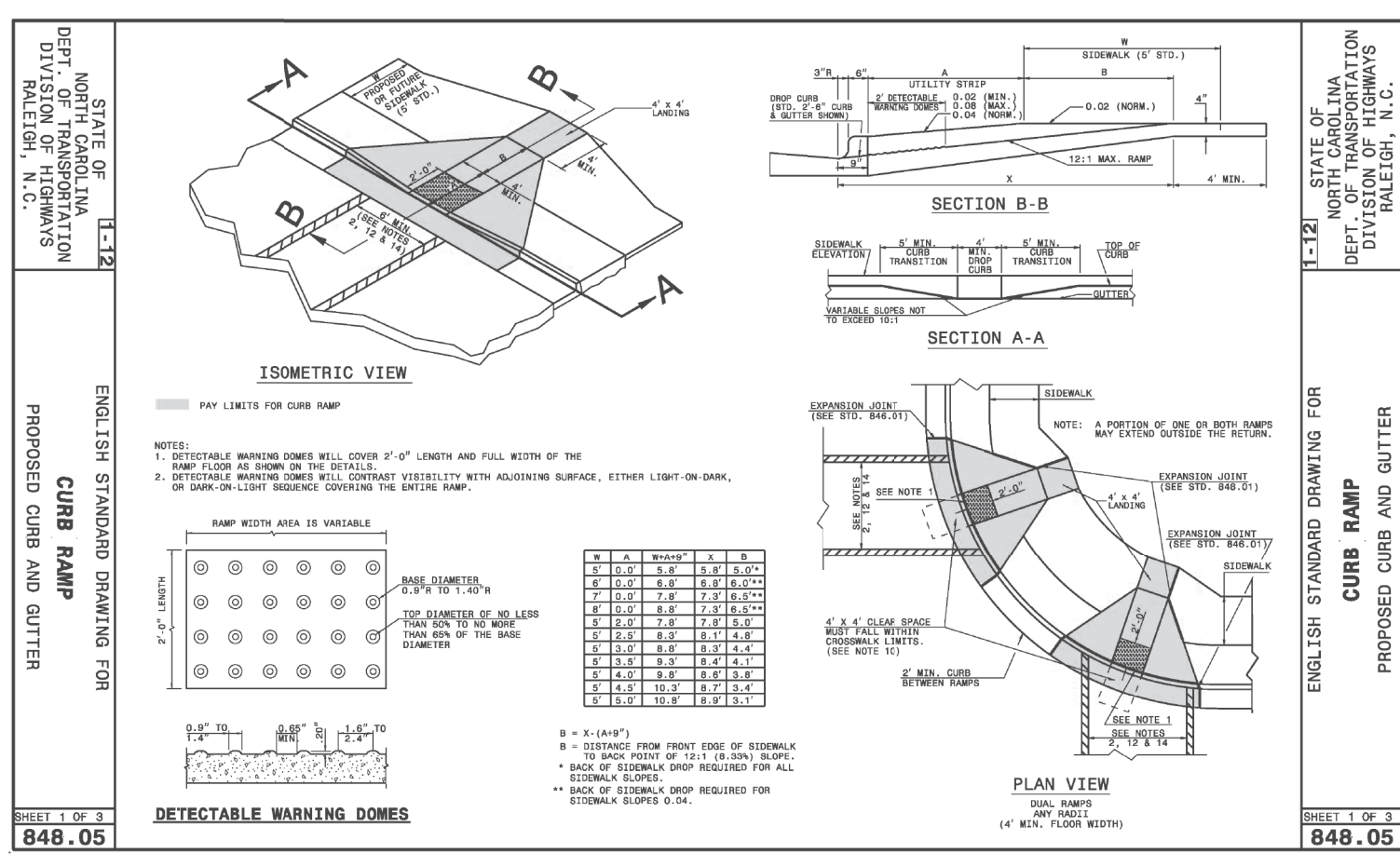
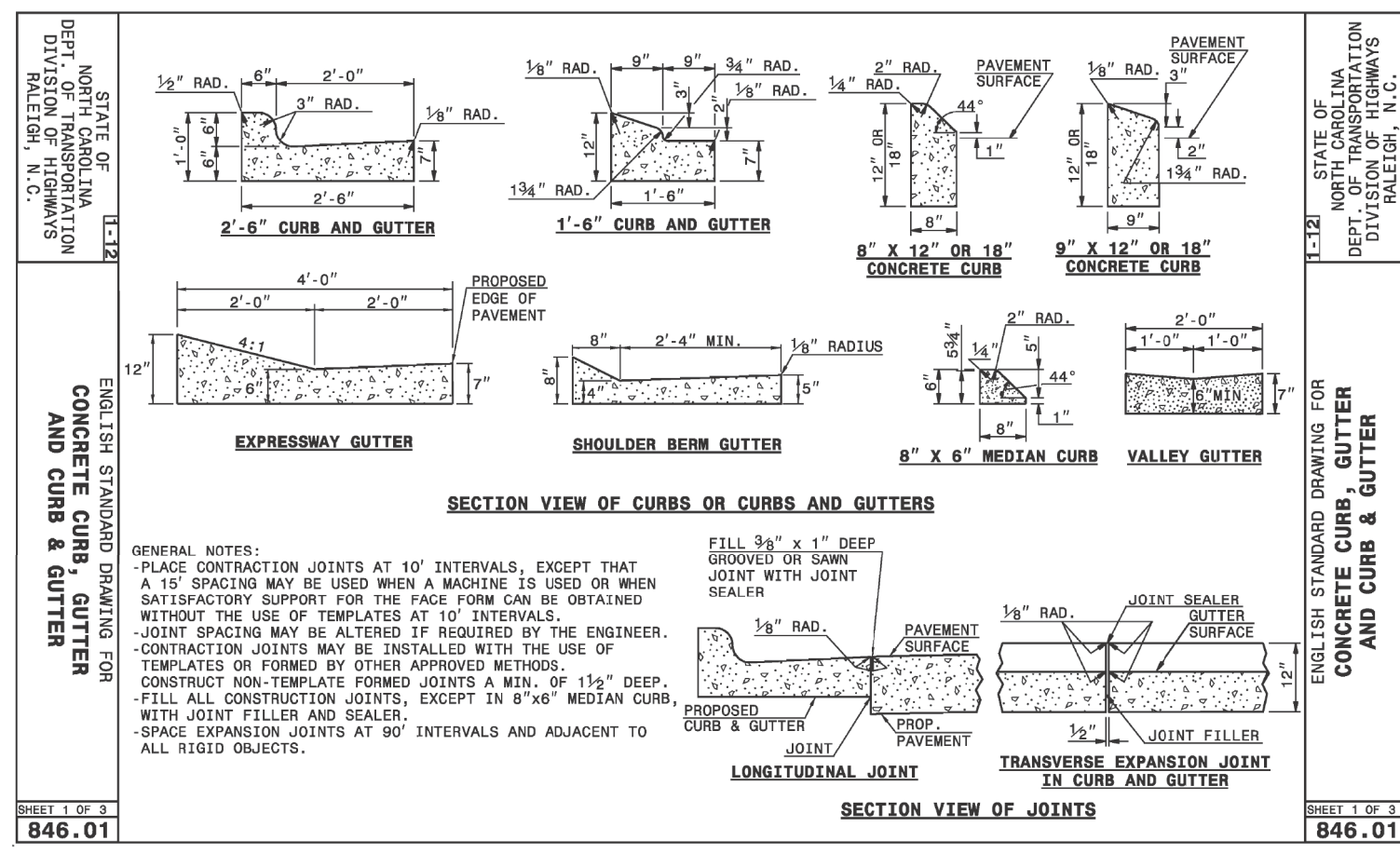
SCALE 1" = 30'

Prepared In the Office of:  
**DEPARTMENT OF TRANSPORTATION**  
 375 SILAS CREEK PKWY, WINSTON SALEM, NC 27127

PROJECT NAME	MAIN ST. SIDEWALK
W.O. NUMBER	NA
SR # / ROAD NAME	US 311/MAIN ST.
COUNTY	STOKES

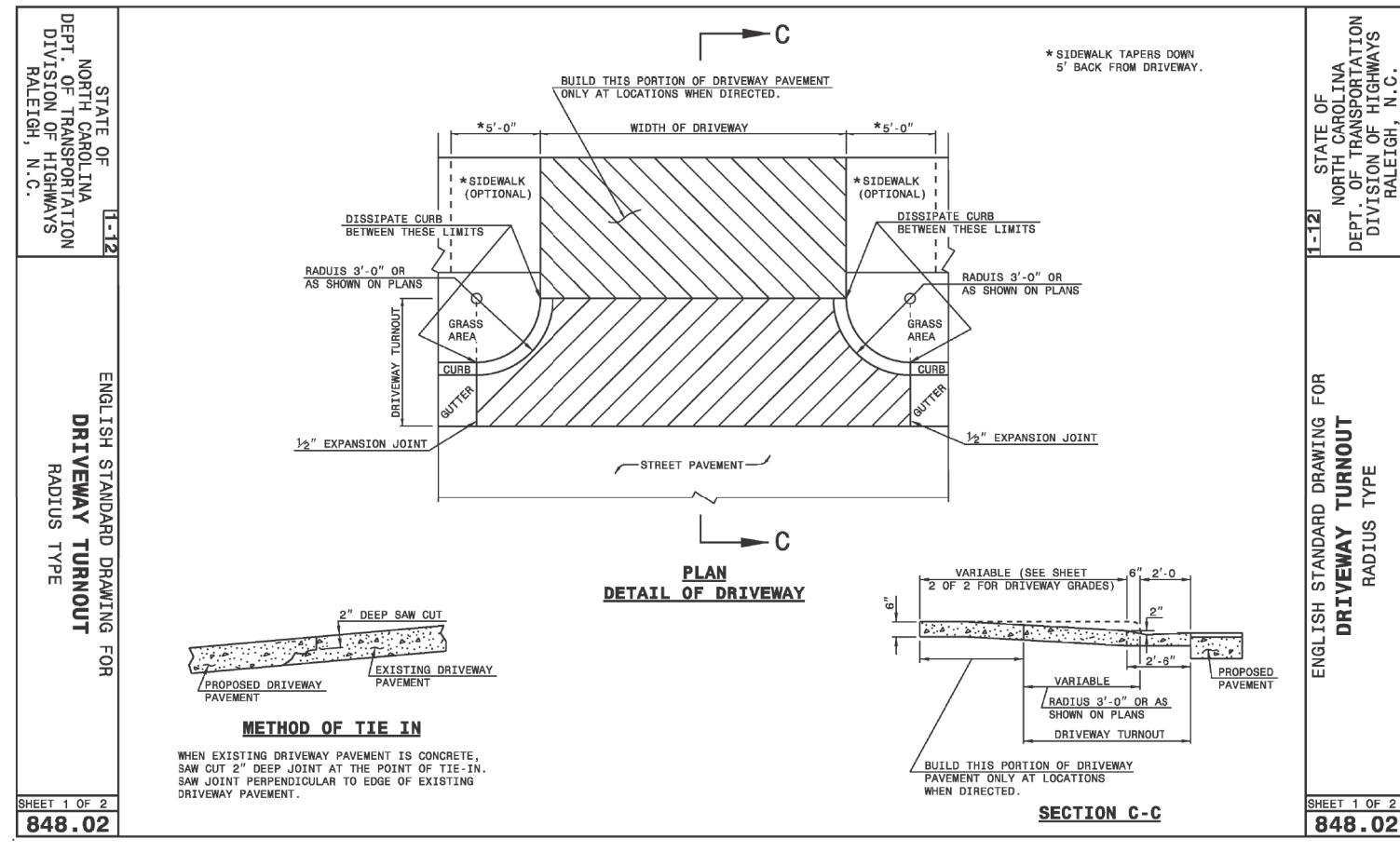
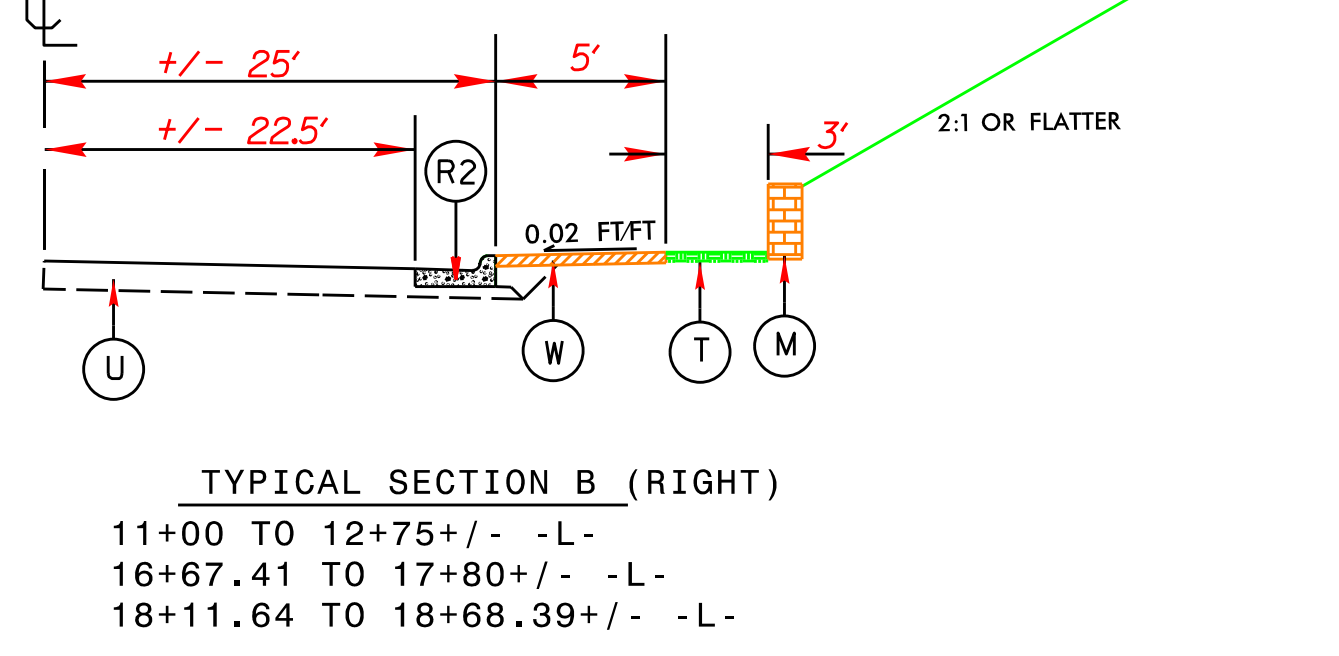
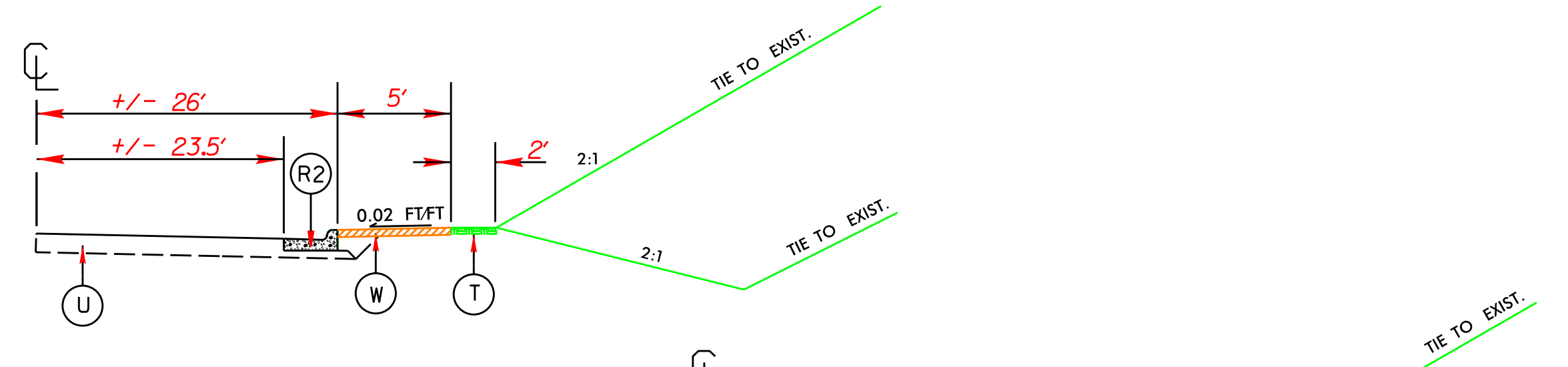
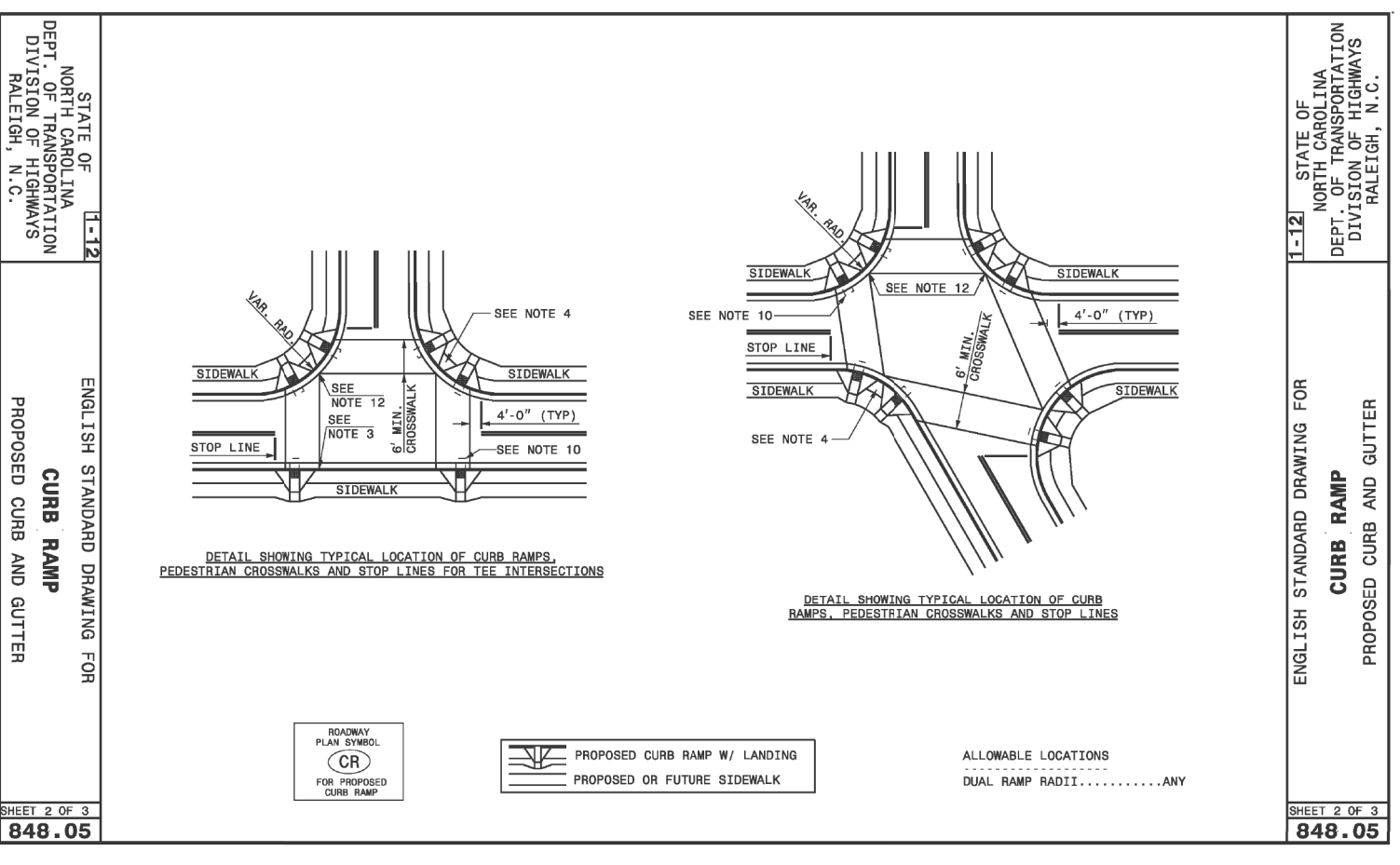
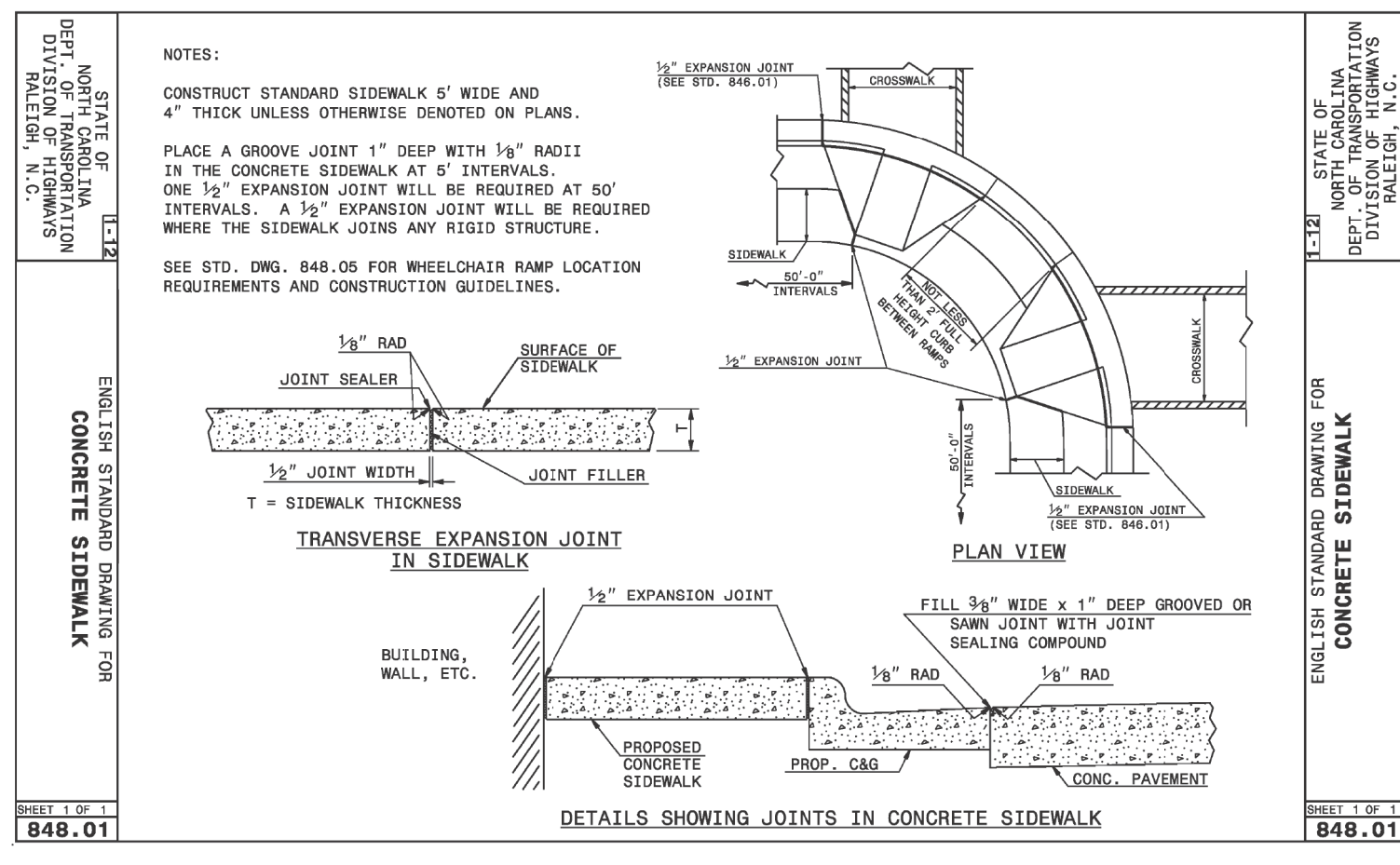
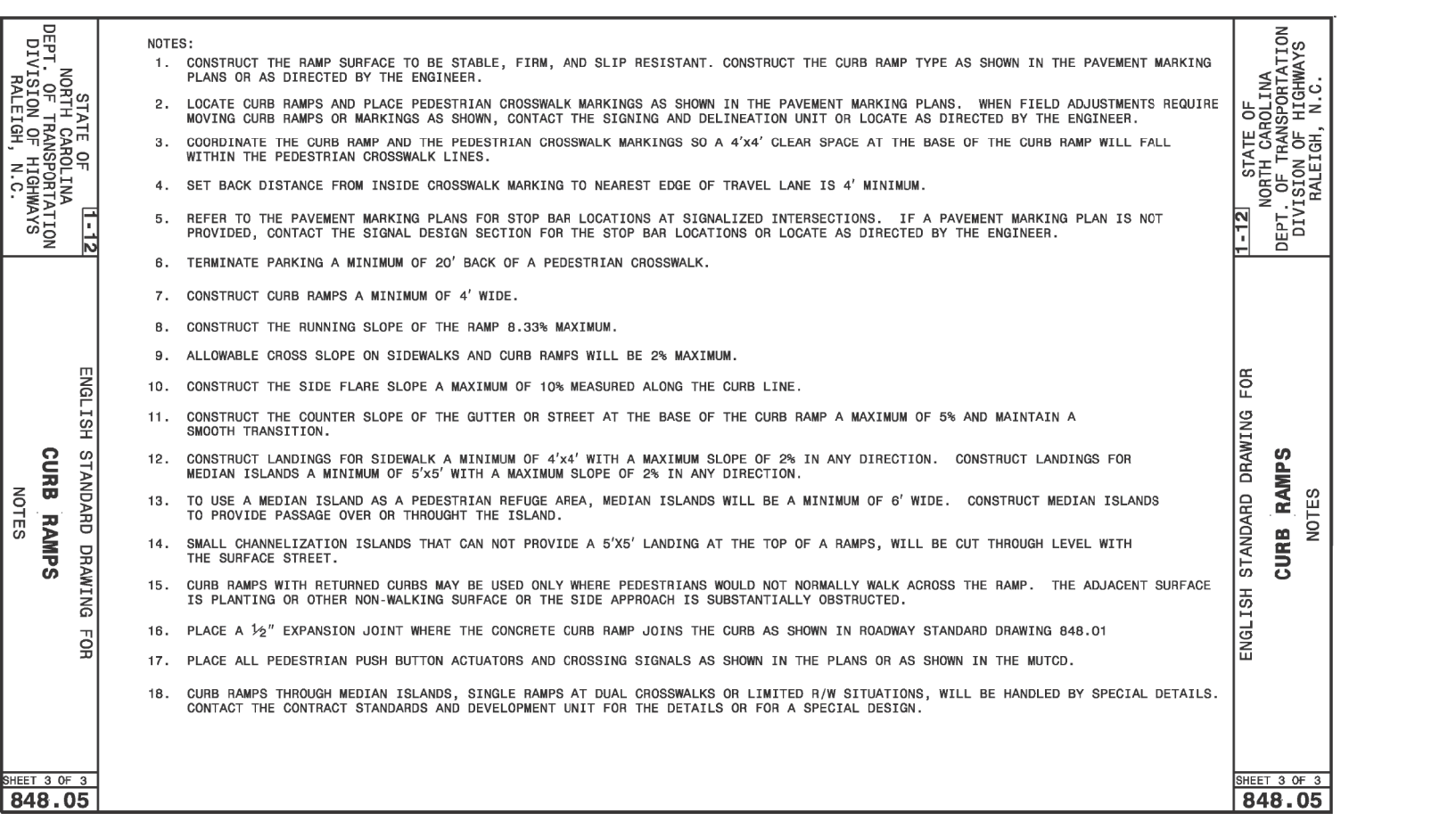
03-JAN-2016 14:19 N:\5066268341\1-rd\CURRENT\Walnut Cove Sidewalk\DCMS\MAIN\SIDEWALK10.dgn





OPTIONAL CHART :

SITE DESCRIPTION	STABILIZATION	TIMEFRAME EXCEPTIONS
PERMETER DRES, SHALES, DITCHES AND SLOPES.	7 DAYS	NONE
HIGH QUALITY WATER ZONES	7 DAYS	NONE
SLOPES STEEPER THAN 5%	7 DAYS	IF SLOPES ARE 10 FT. OR LESS IN LENGTH AND ARE NOT STEEPER THAN 24, 14 DAYS ARE ALLOWED
SLOPES 3% OR FLATTER	14 DAYS	7 DAYS FOR SLOPES GREATER THAN 50 FT. IN LENGTH
ALL OTHER AREAS FLATTER THAN 4%	14 DAYS	NONE, EXCEPT FOR PERIMETERS AND HOW ZONES

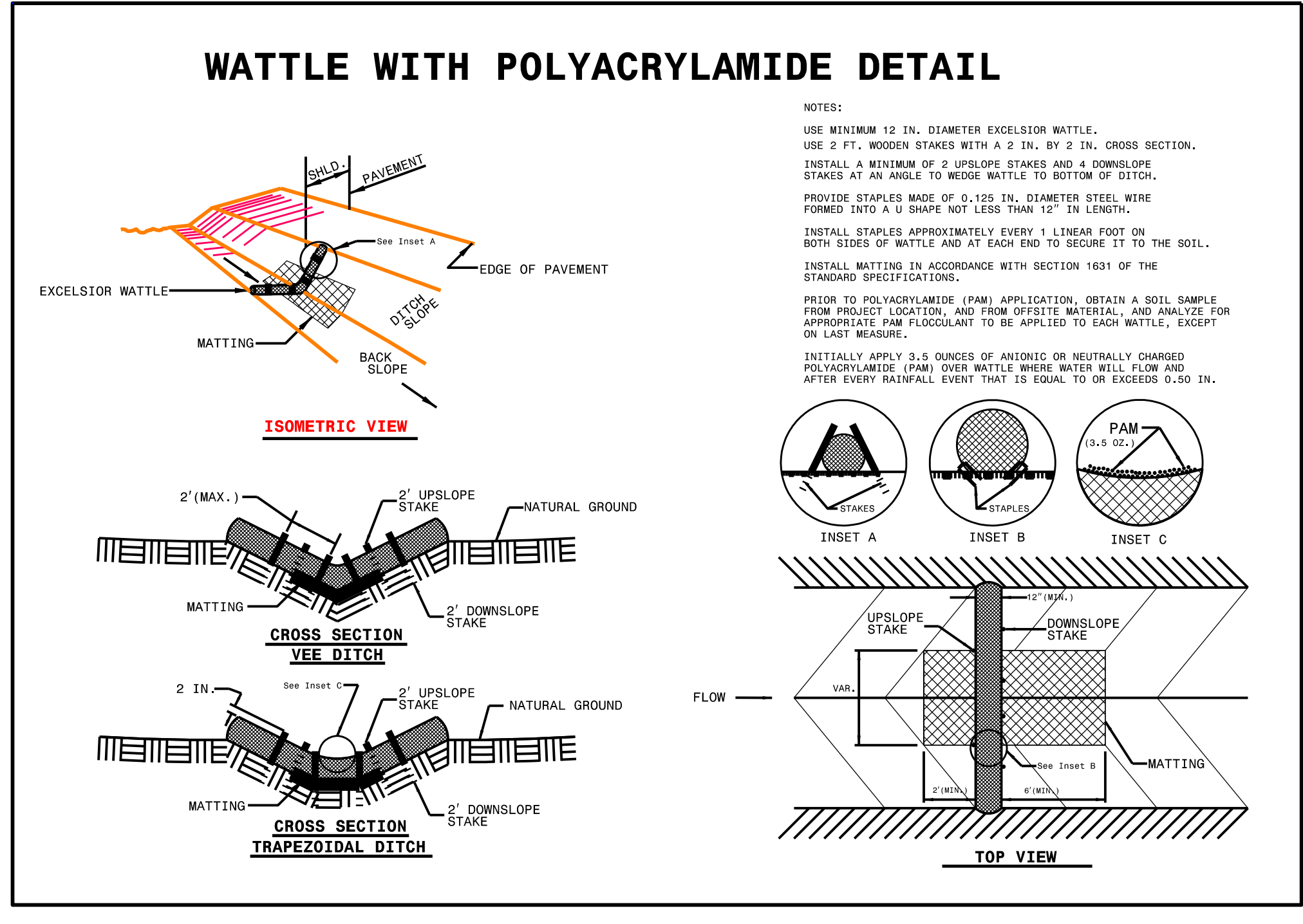


SEDIMENT BASIN DESIGN :

SEDIMENT BASINS THAT DISCHARGE FROM THE PROJECT AND ARE DESIGNED TO HANDLE A DRAINAGE AREA LARGER THAN ONE ACRE WILL BE REQUIRED TO UTILIZE A SURFACE DEWATERING DEVICE, SUCH AS A SKIMMER, WEIR, OR FLASH BOARD RISER.

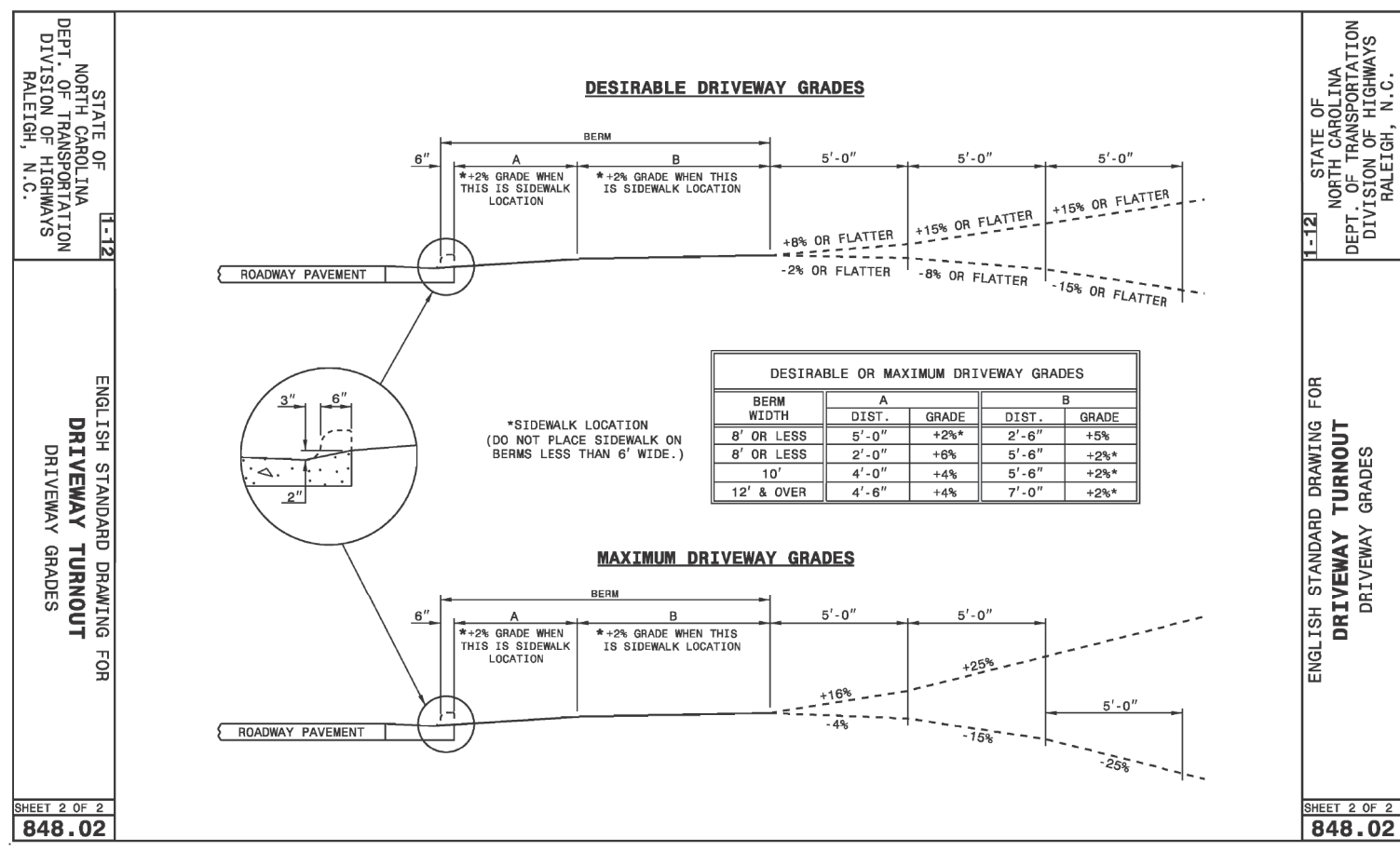
NOTE: APPLY 3.5 OZ OF (PAM) TO EVERY WATTLE EXCEPT FOR THE LAST ONE IN THAT RUN.

THESE EROSION AND SEDIMENT CONTROL PLANS COMPLY WITH THE REGULATIONS SET FORTH BY THE NCG010000 GENERAL CONSTRUCTION PERMIT EFFECTIVE AUGUST 3, 2011 ISSUED BY THE NORTH CAROLINA DEPARTMENT OF ENVIRONMENT AND NATURAL RESOURCES DIVISION OF WATER QUALITY.



PAVEMENT STRUCTURE

C1	PROP. APPROX. 1-1/2" ASPHALT CONCRETE SURFACE COURSE, TYPE S9.5B, AT AN AVERAGE RATE OF 112 LBS. PER IN. PER SQ. YD.
C2	PROP. APPROX. 1-1/2" ASPHALT CONCRETE SURFACE COURSE, TYPE S9.5B, AT AN AVERAGE RATE OF 112 LBS. PER IN. PER SQ. YD.
D1	PROP. APPROX. 4" ASPHALT CONCRETE INTERMEDIATE COURSE, TYPE I19.0B, AT AN AVERAGE RATE OF 114 LBS. PER IN. PER SQ. YD.
E1	PROP. APPROX. 5" ASPHALT CONCRETE BASE COURSE, TYPE B25.0 B, AT AN AVERAGE RATE OF 114 LBS. PER IN. PER SQ. YD.
U	EXISTING PAVEMENT
R1	2'-6" STANDARD CONCRETE CURB AND GUTTER (STD. 846.01)
R2	EXISTING 2'-6" STANDARD CONCRETE CURB AND GUTTER
M	2' RETAINING WALL
T	EARTH; SHOULDER (2'-3')
W	5' SIDEWALK
NOTE:	



8/17/99

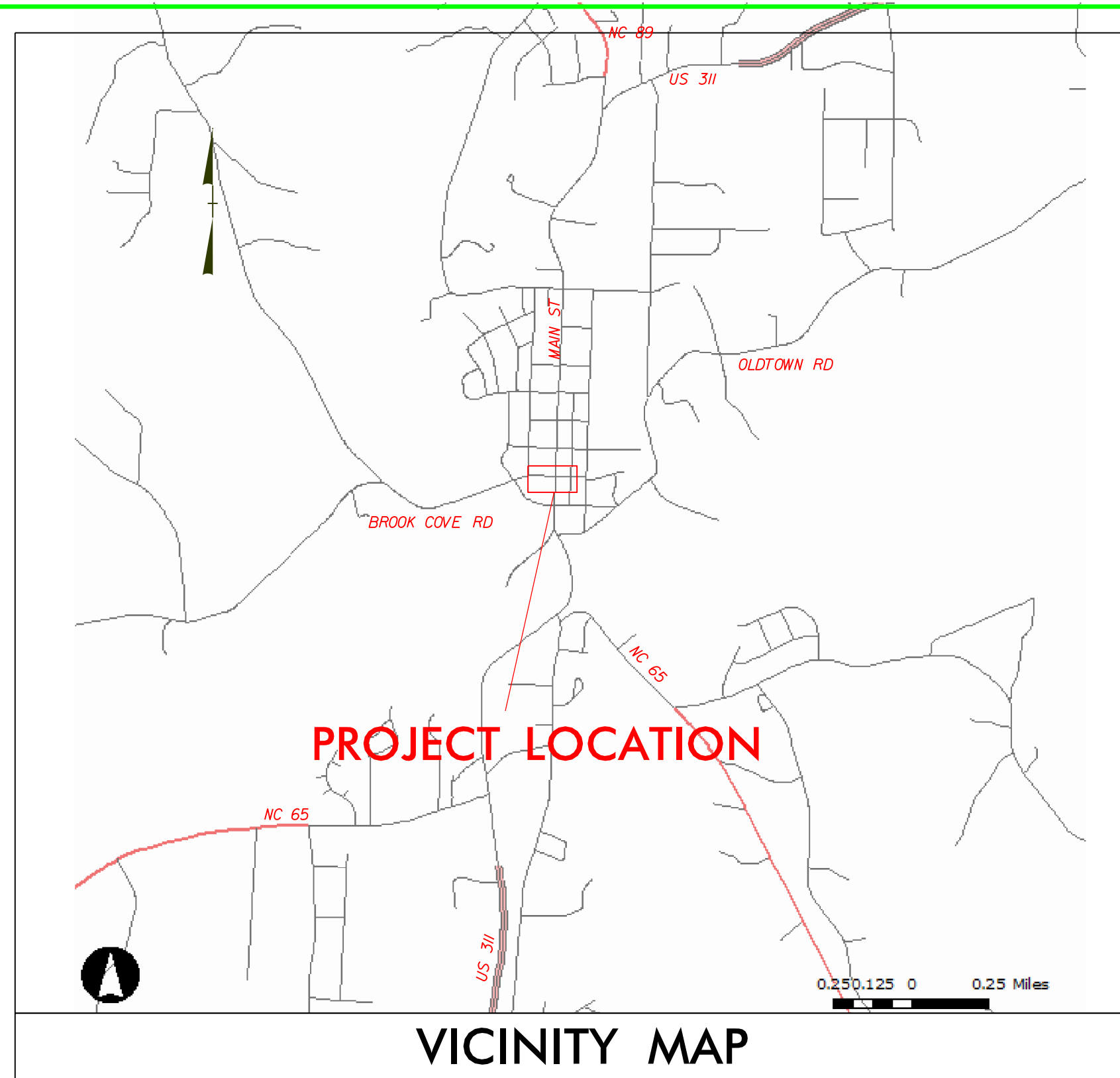
\$\$\$\$\$\$SYTIME\$\$\$\$\$

STATE OF NORTH CAROLINA  
 DIVISION OF HIGHWAYS  
 DIVISION 9 DISTRICT 2

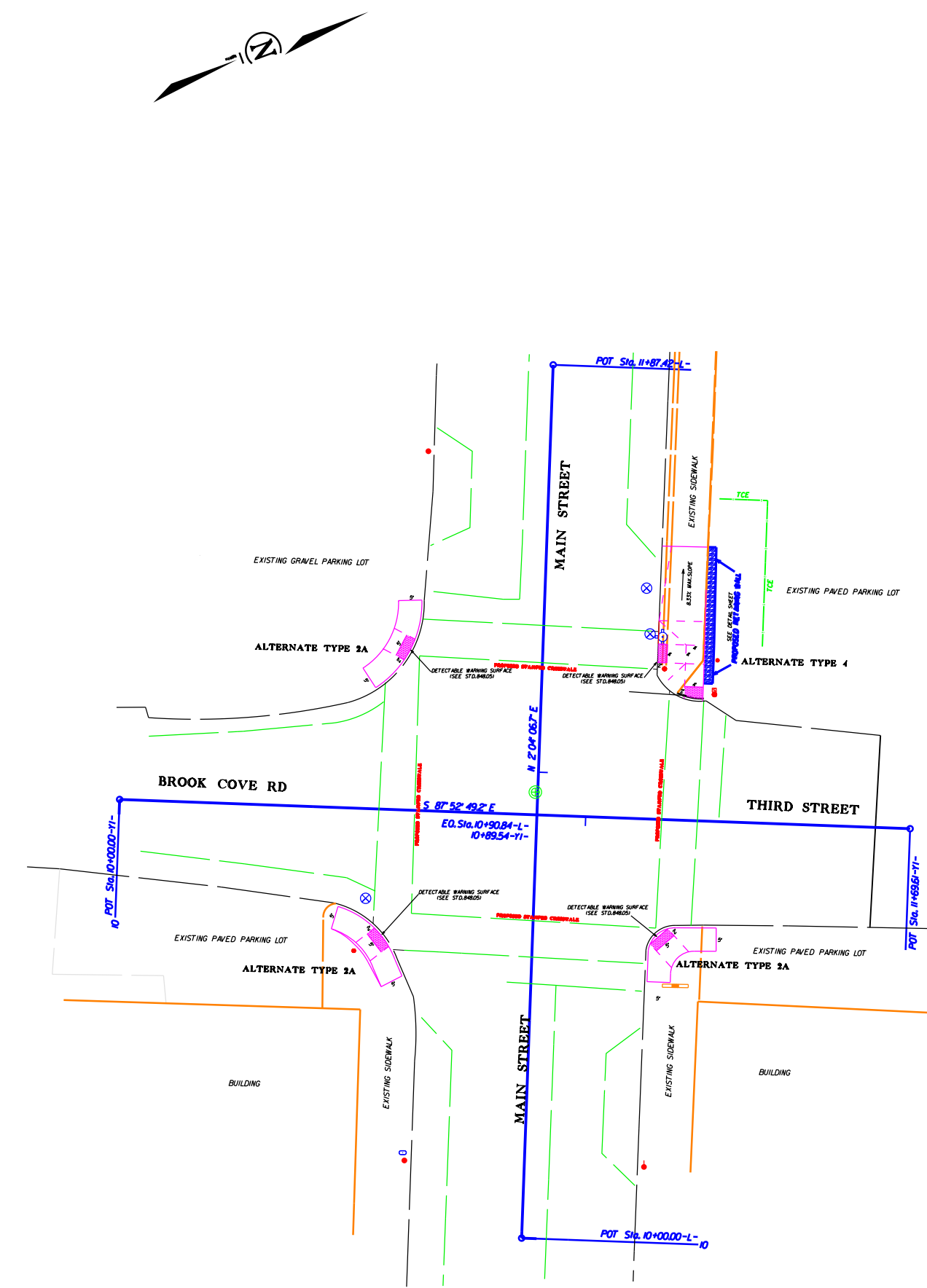
# WALNUT COVE MAIN STREET & THIRD STREET

LOCATION: MAIN STREET AND THIRD STREET IN WALNUT COVE

TYPE OF WORK: CROSSWALK CONSTRUCTION



VICINITY MAP



### LEGEND

- EXISTING EDGE OF PAVEMENT.....
- EXISTING BACK OF CURB.....
- EXISTING EDGE OF TRAVEL WAY.....
- EXISTING CONCRETE ISLAND.....
- PROPOSED EDGE OF PAVEMENT.....
- PROPOSED BACK OF CURB.....
- PROPOSED LANE LINES.....
- (NOTE: STRIPING WILL BE DRAWN UP BY TRAFFIC SERVICES)
- PROPOSED CONCRETE ISLAND.....
- EXISTING RIGHT-OF-WAY LINE.....
- PROPOSED RIGHT-OF-WAY LINE.....
- EXISTING PROPERTY LINE.....
- PROPOSED EASEMENT CONSTRUCTION.....
- PROPOSED TOE OF SLOPE.....

### UTILITIES & STRUCTURES

- UTILITY & SIGNAL POLE.....
- POWER POLE.....
- TELEPHONE PEDESTAL.....
- GUY WIRE.....
- SIGNAL BOX.....
- SANIT. SEWER MANHOLE.....
- SANIT. SEWER CLEANOUT.....
- WATER METER.....
- WATER VALVE.....
- FIRE HYDRANT.....
- GAS METER.....
- GAS VALVE.....
- CATCH BASIN & D'S.....
- GUARDRAIL.....
- FENCE.....
- SIDEWALK.....
- TREE.....
- HEDGE ROW.....

### EROSION CONTROL LEGEND

- ROCK INLET PROTECTION:
- 896.01 TYPE A.....
  - 896.02 TYPE B.....
  - 896.03 TYPE C.....
  - 897.01 ROCK PIPE INLET PROTECTION.....
  - N/A PIPE OUTLET ENERGY DISSIPATOR.....
  - N/A DRAINAGE TURNOUT.....
  - N/A RIP-RAP LINED DITCH.....
  - N/A STREAM.....
  - N/A HIGH POINT/ WATER FLOW DIRECTION.....
  - 245.01 SILT BASIN TYPE A.....
  - 245.02 SILT BASIN TYPE B.....
  - 245.03 TEMPORARY SILT DITCH.....
  - 245.05 TEMPORARY DIVERSION DITCH.....
  - 100.01B STORM DRAINAGE GE PIPE.....
  - 890.05 TEMP. SLOPE DRAIN W/ EARTH BERM.....
  - 892.01 TEMPORARY ROCK SEDIMENT DAM TYPE A.....
  - 892.02 TEMPORARY ROCK SEDIMENT DAM TYPE B.....
  - A BAFFLE IN A SEDIMENT DAM (EVERY 10').....
  - 892.04 TEMPORARY ROCK SILT CHECK TYPE A.....
  - 893.01 TEMPORARY SILT FENCE.....
  - 894.01 ROCK SILT SCREEN.....
  - 895.10 TEMPORARY ROCK SILT CHECK TYPE B.....
  - N/A WATTLE.....

TITLE SHEET NOT TO SCALE

Prepared In the Office of:  
**DEPARTMENT OF TRANSPORTATION**  
 375 SILAS CREEK PKWY, WINSTON SALEM, NC 27127

2002 STANDARD SPECIFICATIONS

COUNTY: FORSYTH      11/08/2012 NTS II  
 DATE DRAWN      DRAWN BY

W.O. NUMBER: NA

PLAN SCALE: NA      REVISED DATE      DRAWN BY

<b>DISTRICT ENGINEER</b>	<b>DIVISION TRAFFIC ENGINEER</b>
P.E.      DATE	P.E.      DATE
JPR SIGNATURE:	JPC SIGNATURE:

**DIVISION OF HIGHWAYS  
 STATE OF NORTH CAROLINA**

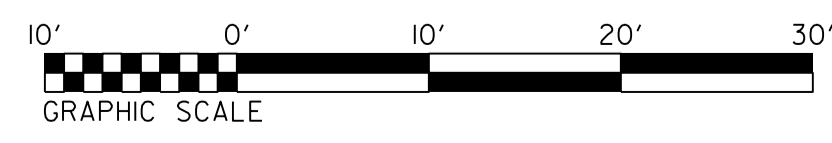
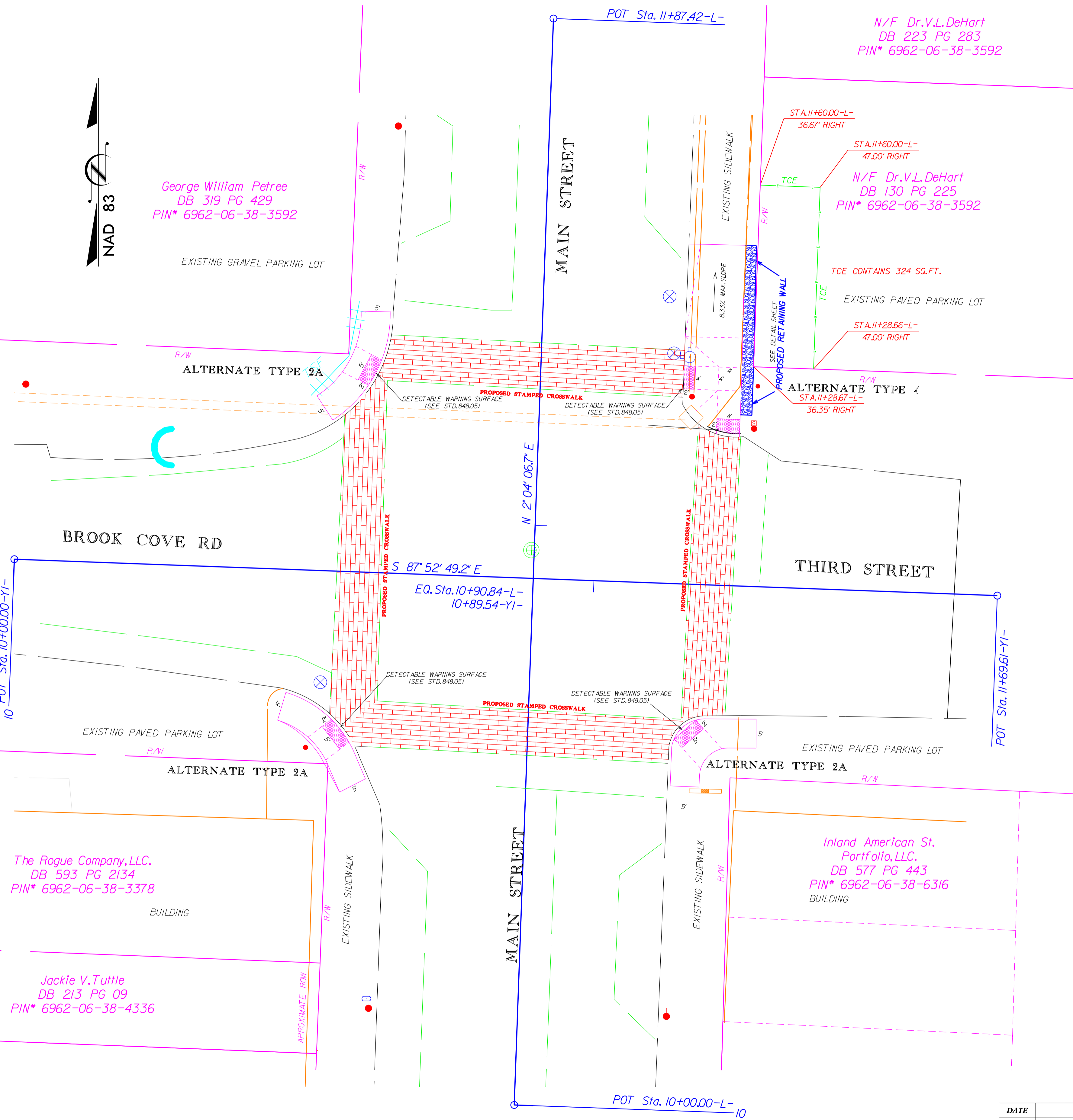
8/17/99  
 18-MAR-2014 11:51:30  
 N:\50626804\1\1\1\1\CURRENT\Walnut Cove Sidewalk\DCMS\MAIN\STBROOKCOVERD.RDY.TSH\_2D.dgn  
 2/10/16



George William Petree  
DB 319 PG 429  
PIN# 6962-06-38-3592

N/F Dr.V.L.DeHart  
DB 223 PG 283  
PIN# 6962-06-38-3592

N/F Dr.V.L.DeHart  
DB 130 PG 225  
PIN# 6962-06-38-3592



The Rogue Company, LLC.  
DB 593 PG 2134  
PIN# 6962-06-38-3378

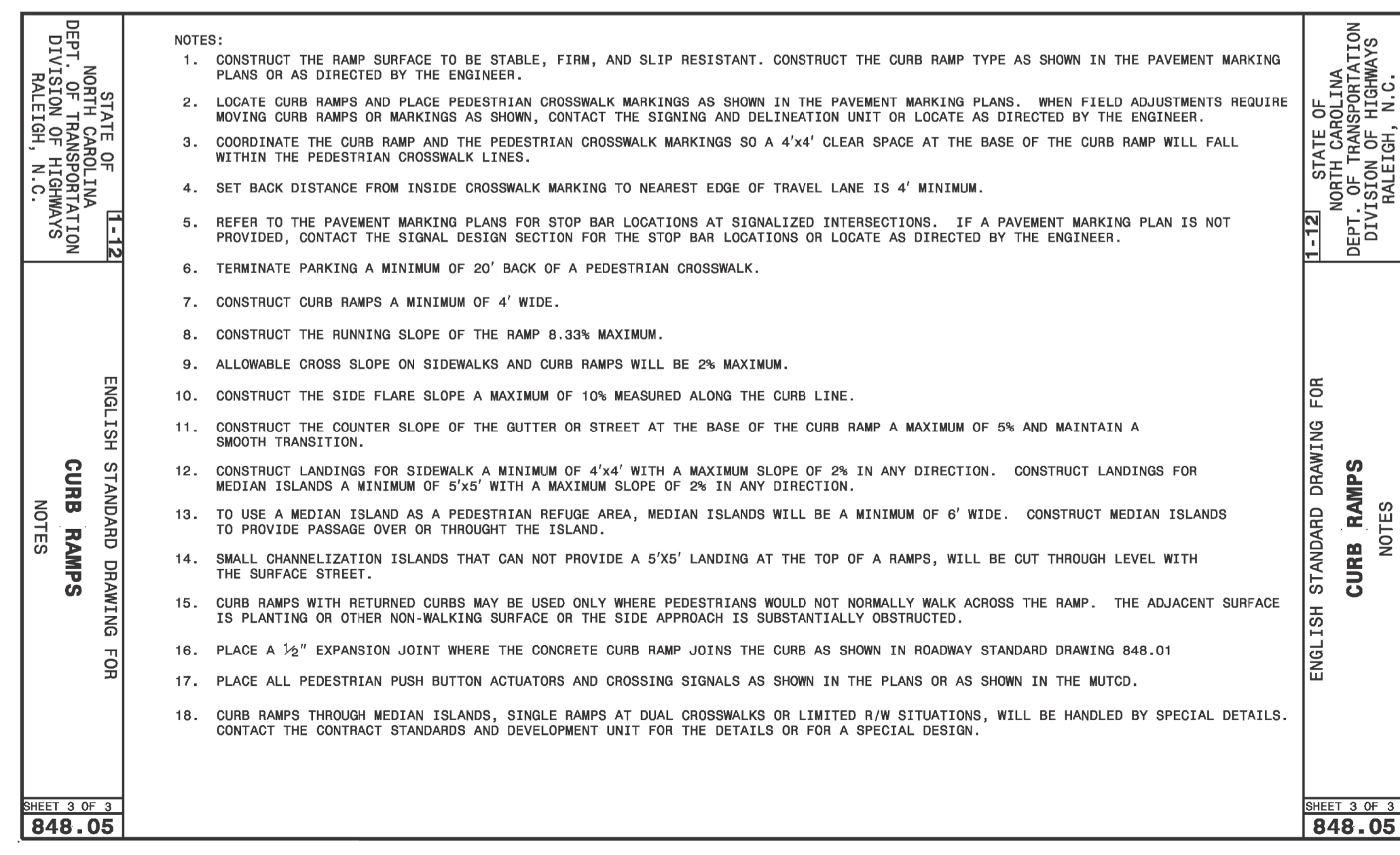
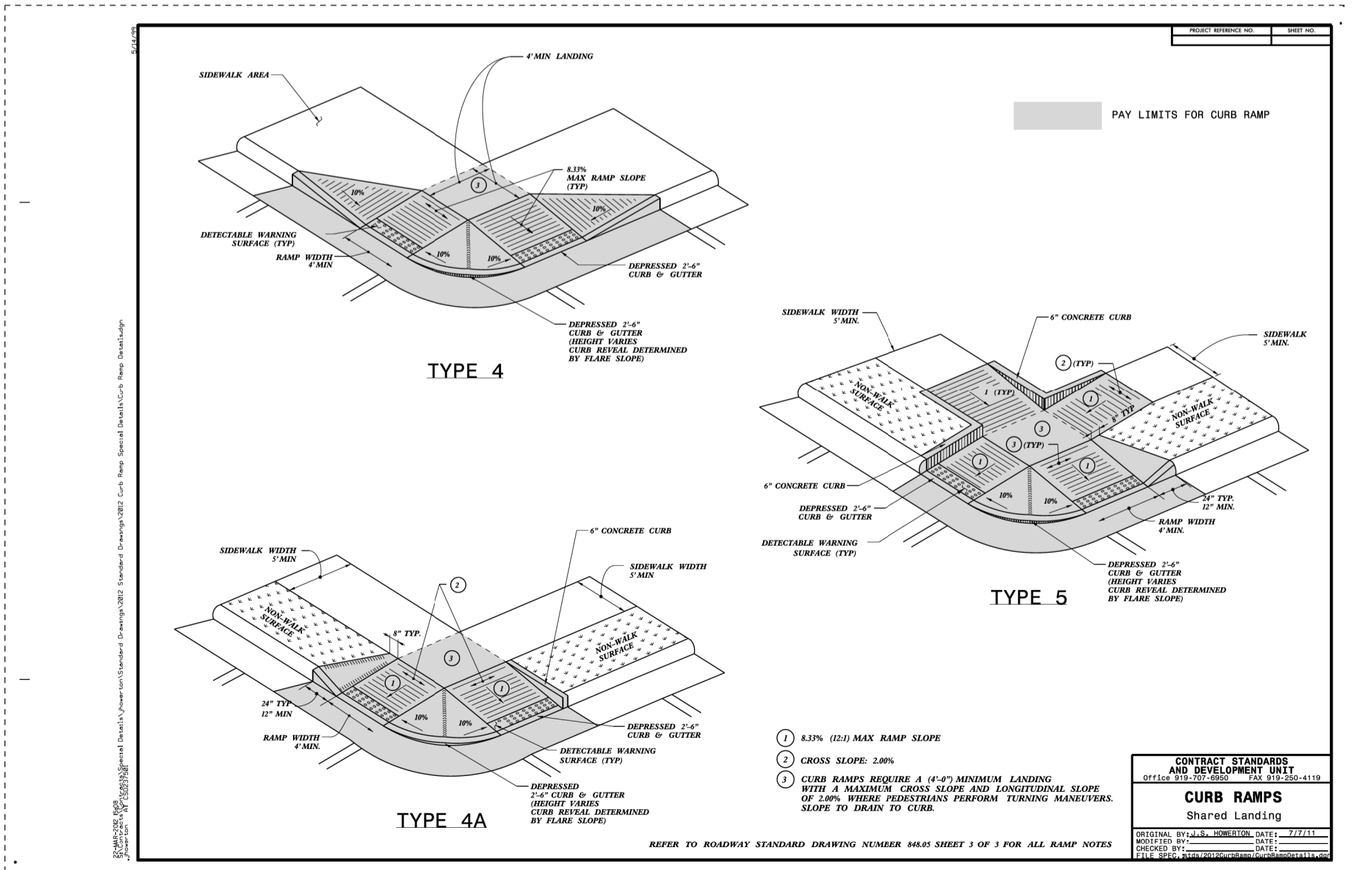
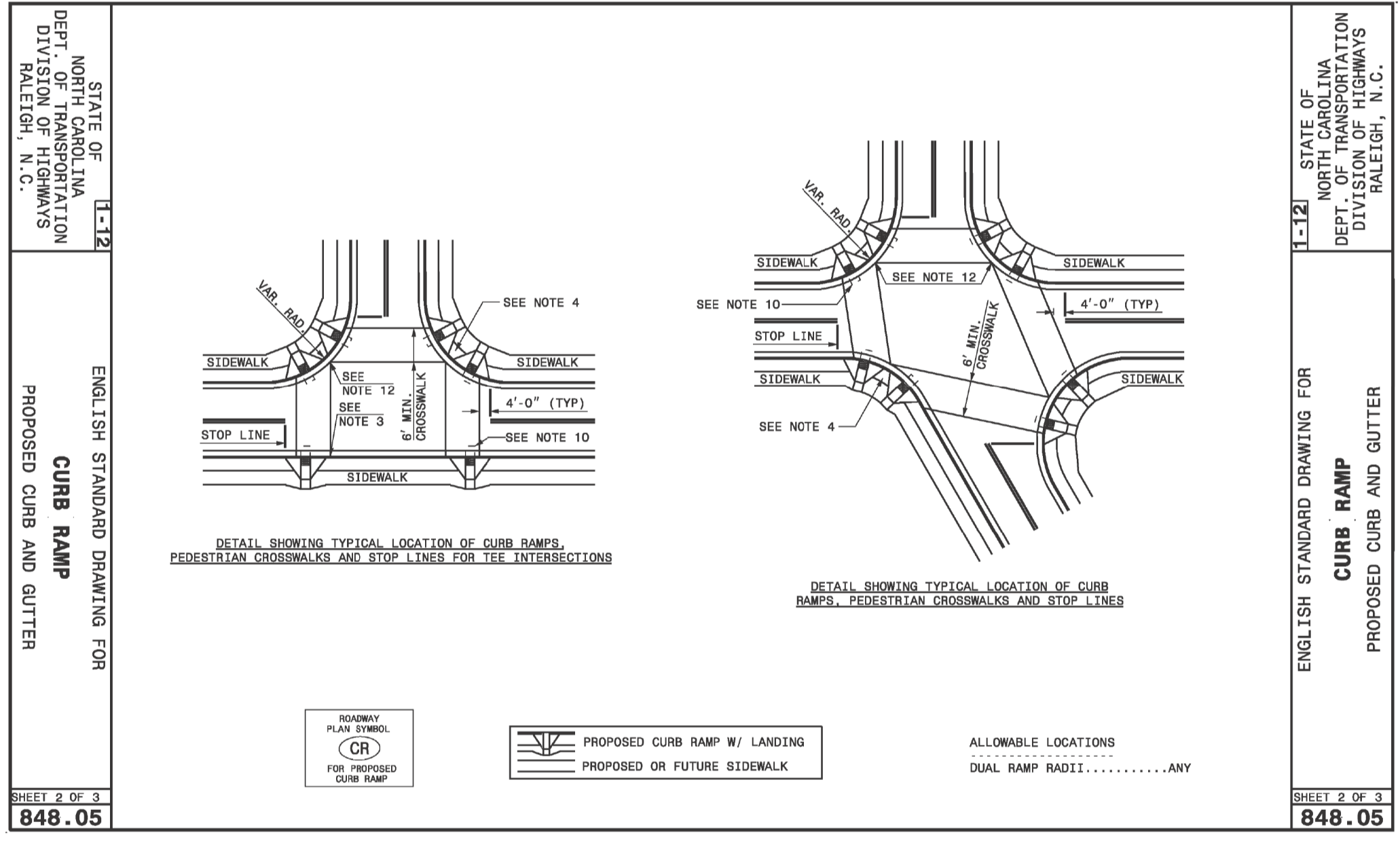
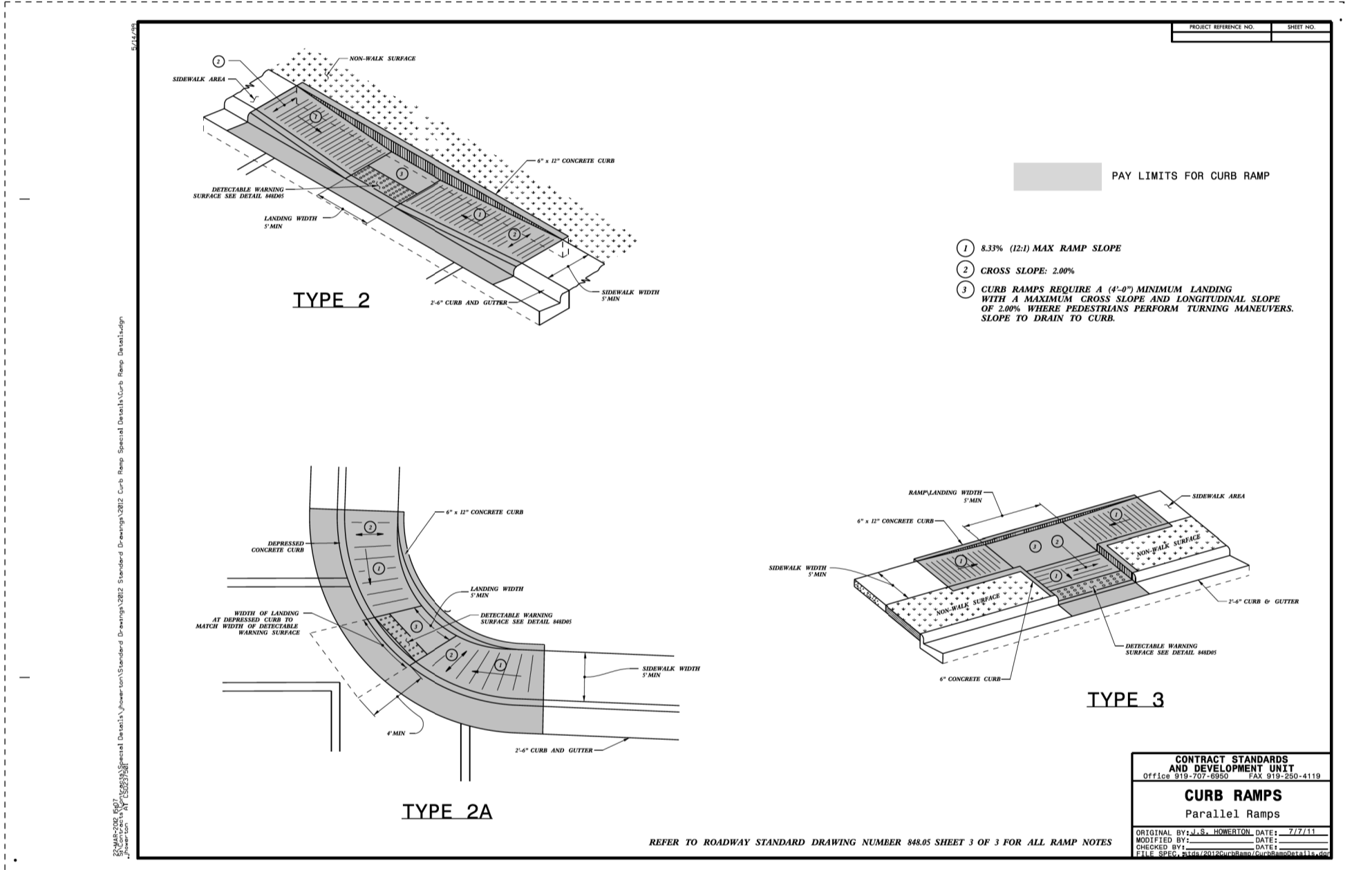
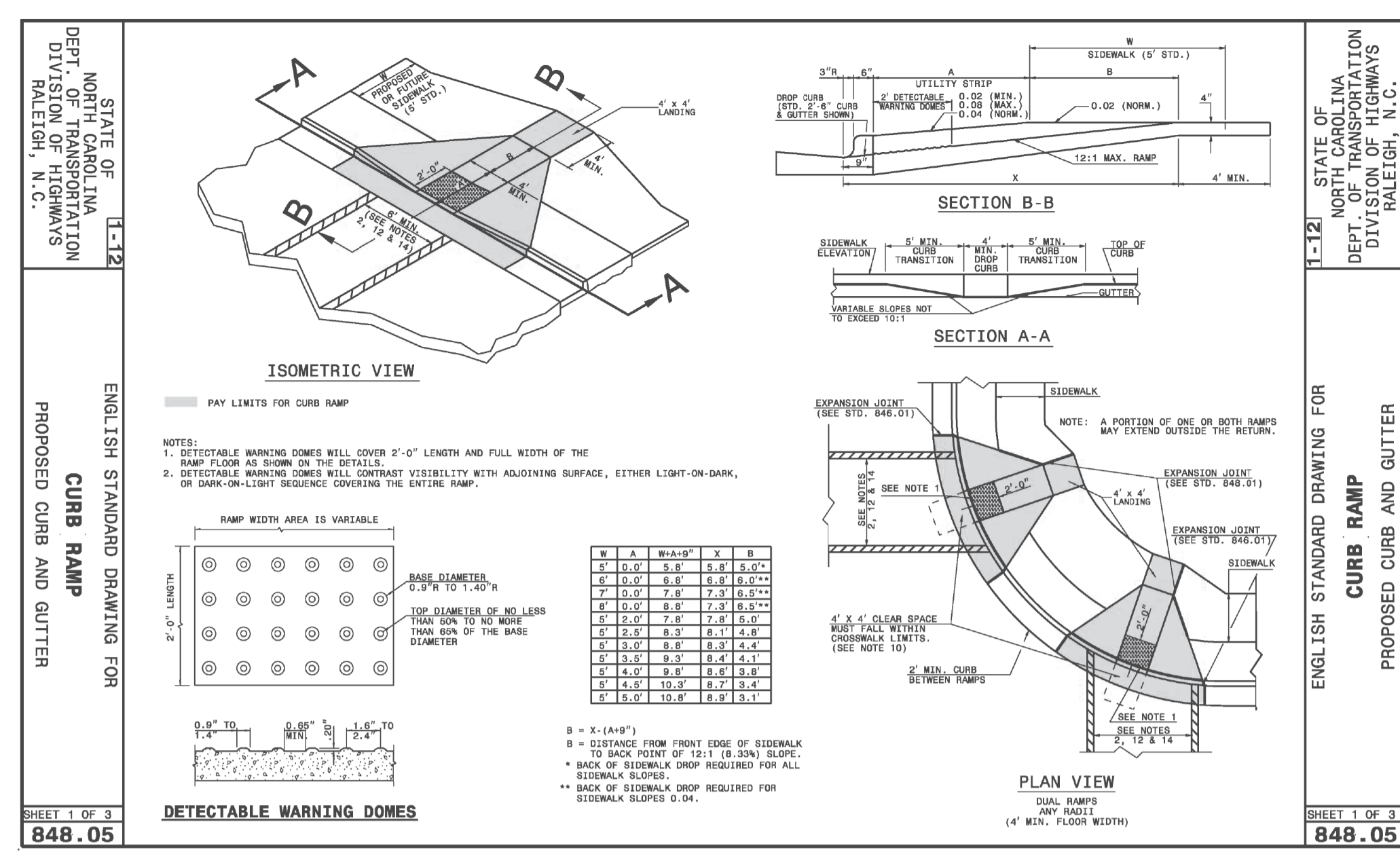
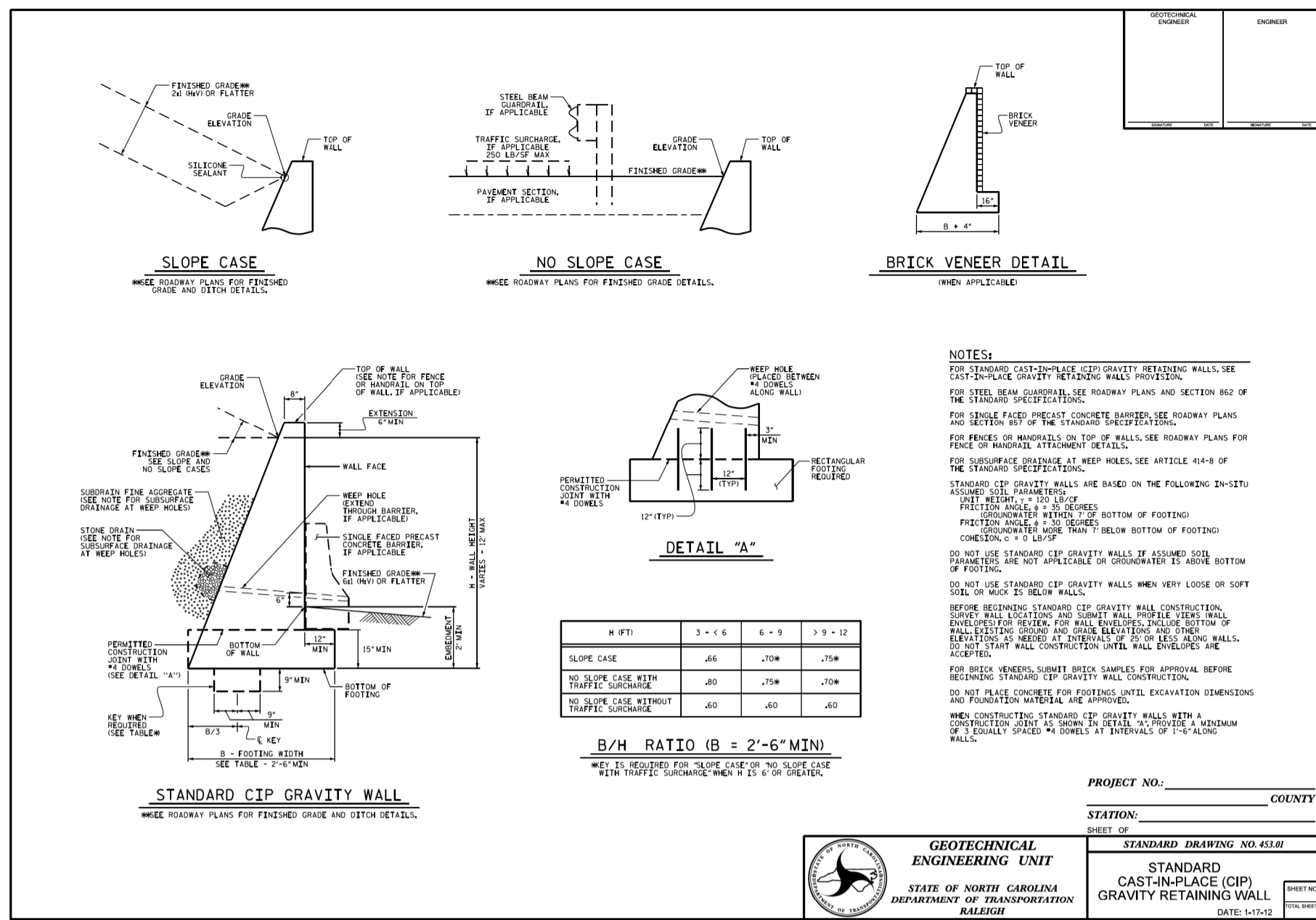
Jackie V. Tuttle  
DB 213 PG 09  
PIN# 6962-06-38-4336

Inland American St.  
Portfolio, LLC.  
DB 577 PG 443  
PIN# 6962-06-38-6316

Prepared In the Office of:  
**DEPARTMENT OF TRANSPORTATION**  
375 SILAS CREEK PKWY, WINSTON SALEM, NC 27127

2006 STANDARD SPECIFICATIONS	APP. BY DIST. ENG.	DATE
PROJECT NAME	APP. BY DIV. TRAFFIC ENG.	DATE
W.O. NUMBER	REVISION	CHECKED BY
US 311/MAIN ST.	11-8-12	NTSII
SR # /ROAD NAME	DATE DRAWN	DRAWN BY
STOKES COUNTY	SCALE 1" = 10'	

DATE	REVISIONS



18-MAR-2014 15:17:55  
 N:\50ced260341\10102700366.dgn

18-MAR-2014 15:17:55  
 N:\50ced260341\10102700366.dgn  
 Sidewalk\NCGMS\MAIN\BROCKCOVERD\_Rdy\_dtl\_DETAIL.dgn